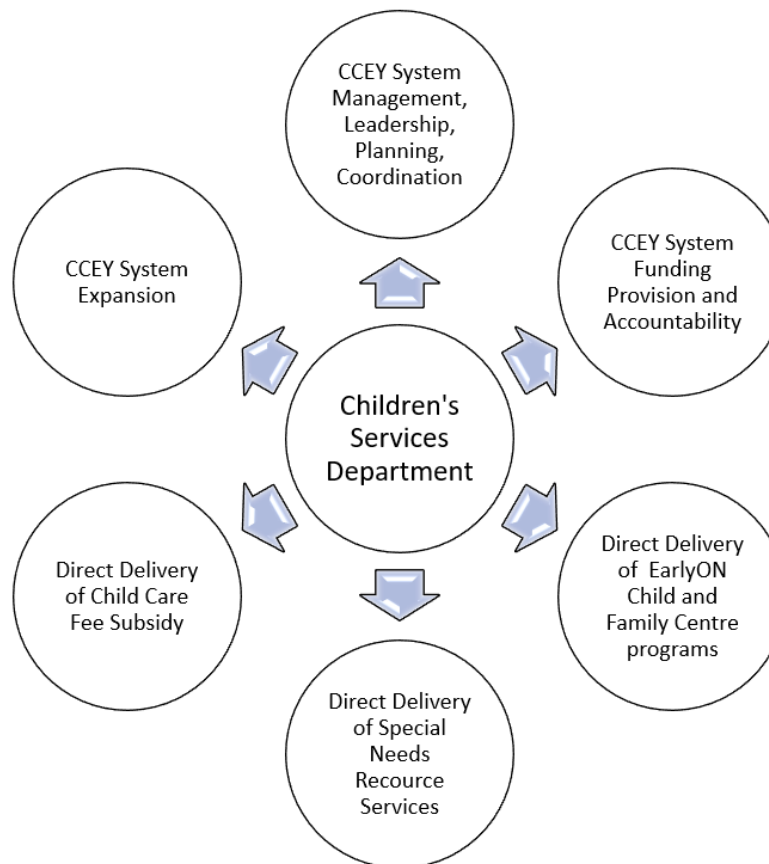


# 2022-2026 Licensed Child Care Directed Growth Strategy

Shannon Brown,  
Manager,  
Children's Services Department  
Oct. 2, 2023

# Children's Services Department Program and Services

## ROLES AND RESPONSIBILITIES OF THE CHILDREN'S SERVICES DEPARTMENT



# Service System Management Responsibilities

Designated as the Consolidated Municipal Service Manager (CMSM) for the Child Care and Early Years System (CCEY) under Provincial legislation, the United Counties of Leeds and Grenville is responsible for the planning, oversight, funding, expansion and accountability of licensed child care (centre-based and licensed home child care) programs and EarlyON CFC programs/services in the community.

Though the County does not currently directly operate any licensed child care programs, we do directly operate all of the EarlyON Child and Family Centres across Leeds and Grenville.

# Licensed Child Care

The current licensed child care system in Leeds and Grenville is a patchwork of centre-based, school-based, and licensed home child care spaces that are predominately located in more populated areas of Leeds and Grenville.

The majority of child care spaces are centre or school-based.

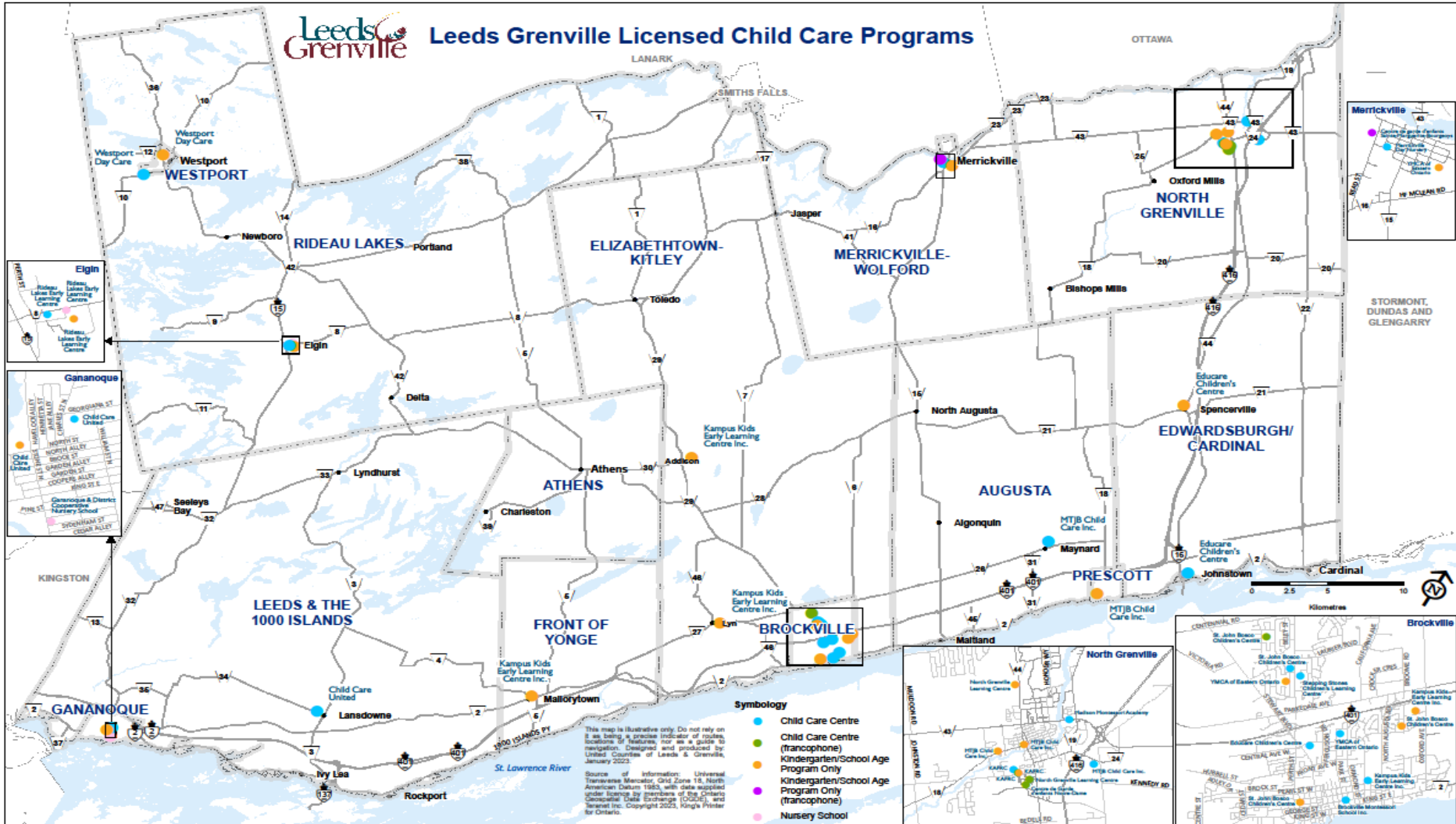
Currently there are seventeen (17) licensed child care agencies with programs in Leeds and Grenville:

- 42 centre sites
- Mostly Kindergarten/School Age Before/After programs
- 1 licensed home child care agency with 13 home child care providers
- 881 Infant, Toddler, Preschool or Family Grouping Spaces Operating
- 1271 Kindergarten/School Age Spaces Operating

# Licensed Centre-Based Child Care Spaces

CENTRE-BASED SPACES				
Region	Licensed Spaces <i>(Infant, Toddler, Preschool or Family Grouping)</i>	Operating Spaces <i>(Infant, Toddler, Preschool or Family Grouping)</i>	Licensed Spaces <i>(Kindergarten, School-Age)</i>	Operating Spaces <i>(Kindergarten, School-Age)</i>
Rideau Lakes Westport Area	76	58	73	28
North Grenville Merrickville Wolford	400	380	785	477
Edwardsburgh-Cardinal Prescott North Augusta	109	108	282	222
Brockville Elizabethtown-Kitley	294	266	777	450
Athens Front of Yonge Leeds and Thousand Islands Gananoque	86	69	112	94
<b>TOTAL</b>	<b>965</b>	<b>881</b>	<b>2029</b>	<b>1271</b>

# Licensed Centre-Based Child Care Spaces



# Licensed Centre-Based Child Care in Edwardburgh Cardinal

The Township of Edwardburgh Cardinal has one (1) licensed toddler and preschool child care program in the community that operates out of South Edwardburgh Public School in Johnstown.

Operator	No. of Infant Spaces	No. of Toddler Spaces	No. of Preschool Spaces	Total Number of Infant, Toddler and/or Preschool Spaces
Educare	0	15	16	31
<b>TOTAL</b>				

# Federal and Provincial Child Care Priorities

In March 2022, the Provincial/Federal Government announced the Canada Wide Early Learning and Child Care (CWELCC) (aka \$10 day a child care).

Ontario's vision for the CWELCC system is that more families in Ontario have access to high quality, affordable, flexible, and inclusive early learning and child care no matter where they live.

The United Counties was responsible for the implementation of CWELCC over the last year, with 15 of the 17 existing licensed child care operators across the County enrolling.



# CWELCC Directed Growth Strategy

In 2023, the Provincial Government introduced *CWELCC Directed Growth Strategy* initiative. As the designated CMSM, the County was tasked by the Provincial Government to identify the communities that will receive the new licensed child care spaces being created under the 2022-2026 CWELCC Directed Growth Strategy.

The province identified specific population criteria that CMSMs were required to use in the identification of designated communities for the CWELCC Directed Growth Strategy child care spaces.

This included:

- Low-Income Families
- Families with Children with Special Needs
- Francophone Families
- Indigenous Families
- Racial Minority Families
- New Immigrant Families

# CWELCC Directed Growth Strategy

## New Child Care Spaces

The Counties was allocated by the Province a total of 397 new licensed child care spaces to be created during the period of 2022-2026 under the CWELCC Directed Growth Strategy.

These 397 CWELCC new child care spaces will be in addition to the current licensed child care spaces already operating across Leeds and Grenville.

120 of the spaces will be created in new schools or new additions to schools and 277 of the spaces will be community based spaces.

# CWELCC Directed Growth Strategy

## Data Informed Planning

Committed to ensuring that the child care spaces created under the CWELCC Directed Growth Strategy are responsive to the needs of families and communities, the County undertook a broad parent and community consultation in late winter/early spring 2023 to collect information and feedback to inform the CWELCC Directed Growth Strategy.

A total of 755 parent surveys/feedback forms, representing all regions in Leeds and Grenville, were received and used to inform the Counties' CWELCC Directed Growth Strategy.

In addition to community consultations and a parent survey, several data sets were also used to inform the Leeds and Grenville plan (i.e. 2021 Census, OW Caseload Numbers, Early Development Instrument Data, etc.).

# What the Data and Consultation Told Us?

That the new CWELCC Directed Growth Strategy child care spaces should be dedicated to serving infants, toddlers and/or preschool children.

That some communities and families need child care hours that are more flexible to accommodate parent shift work, etc.

That Leeds and Grenville is rich in local assets including expansive waterways, abundant forestry lands, the Canadian Shield, a growing arts community, robust agricultural operations and manufacturing excellence. As such, programs and spaces created under the CWELCC Directed Growth Strategy should reflect these assets in both design and operation, while also honouring the indigenous people who first lived on the lands that encompass the communities of Leeds and Grenville.

# CWELCC Directed Growth Strategy Child Care Space Allocation

Region	Number of Infant, Toddler and/or Preschool School Based CWELCC Spaces Being Created	Number of Infant, Toddler and/or Preschool Community Based CWELCC Spaces Being Created	Total Number of Infant, Toddler and/or Preschool CWELCC Spaces Being Created
Rideau Lakes Westport Area	0	40	40
North Grenville Merrickville Wolford	62	6	68
Edwardsburgh-Cardinal Prescott North Augusta	0	66	66
Brockville Elizabethtown-Kitley	58	100	158
Athens Front of Yonge Leeds and Thousand Islands Gananoque	0	65	65
<b>TOTAL</b>	<b>120</b>	<b>277</b>	<b>397</b>

# CWELCC Directed Growth Operator Selection

To ensure a fair and transparent process for the awarding of the contract to open/operate the identified 397 CWELCC Directed Growth child care spaces, the Counties will undertake a public Expression of Interest process in the coming months.

The Ministry of Education has set the required ratio of not-for-profit versus for-profit licensed child care spaces for children age 0 to 5 years, that must be created in each CMSM region under the CWELCC Directed Growth Strategy. Based on this ratio, the majority of the Leeds and Grenville CWELCC Directed Growth Strategy child care spaces must be opened/operated by non-profit agencies.

Operators selected to operate spaces as outlined in this CWELCC Directed Growth Strategy is required to either currently hold or enter into a Service Agreement with the Counties for CWELCC and is required to maintain their enrollment in CWELCC through to the end of 2026.

# CWELCC Directed Growth Strategy Start-up Funding

Federal/Provincial Funding is being provided to the County to support CWELCC Directed Growth Strategy Implementation.

The funds cannot be used to purchase land or build a new building.

Funds can be provided for:

- Minor renovation/retro-fit of existing space
- Start up: Toys, materials, equipment, office furniture, appliances
- Ongoing Operational funding (i.e. General Operating, etc.)
- Workforce Compensation funding

# CWELCC Directed Growth Strategy

## Next Steps

- Undertake an inventory of potential space: Municipal, school board, community space
- Seek interested partners
- Distribute Expression of Interest (EOI) for Operator selection
- Select Operator(s)
- Enter into contract with Operator(s)
- Provide Funding
- Ongoing support to Operator(s) throughout process



# Other Licensed Child Care Expansion

While the CWELCC Directed Growth Strategy does not prohibit any Child Care Operator from opening new licensed infant, toddler, preschool and/or kindergarten/school-age child care spaces, only the approved 397 licensed CWELCC Directed Growth Strategy spaces will be supported with CWELCC funding (i.e. spaces built outside of the designated 397 would not be subject to reduced parent fees).

The Counties recognizes that the 2022-2026 CWELCC Directed Growth Strategy does not fully address all of the child care needs of families in our community. We remain committed to seeking every opportunity for future licensed child care system growth opportunities that will increase the number of licensed child care spaces operating in our community and improve access for families to affordable high-quality licensed child care services.

Additional CWELCC Directed Growth Strategy spaces may be available in coming years.

# Importance of Municipal Partners

- Identifying existing space/building in the community for consideration
- Connecting families to us/the program
- Supporting and encouraging a connection between new child care program and community
- Continuing the conversation
- Your ongoing support and partnership

# Questions

