



POTENTIA RENEWABLES

Building the Future of Energy Today

ABOUT POTENTIA RENEWABLES

Potentia Renewables (PRI) is a 100% Canadian owned, fully-integrated developer, owner and operator of renewable energy and storage assets



- ◆ **Deep Local Experience.** Over 30% of operating wind and solar projects in Ontario were developed, financed, constructed or operated by a PRI management team member.
- ◆ **Well Capitalized Ownership.** Wholly-owned subsidiary of Power Corporation of Canada. PRI and its direct parents established the Power Sustainable Energy Infrastructure Partnership Fund, which has over **\$1.6BB** of committed capital from its partners.
- ◆ **Growing Portfolio.** Owner and operator of approx. **600 MW** of renewable energy assets in Canada and the U.S. with another **600 MW** of contracted assets currently under construction.

MISSION & VALUES

Building the future of energy today

MISSION

To safely and sustainably build and operate renewable energy projects for generations to come.

VALUES

Excellence – Passion – Integrity – Agility

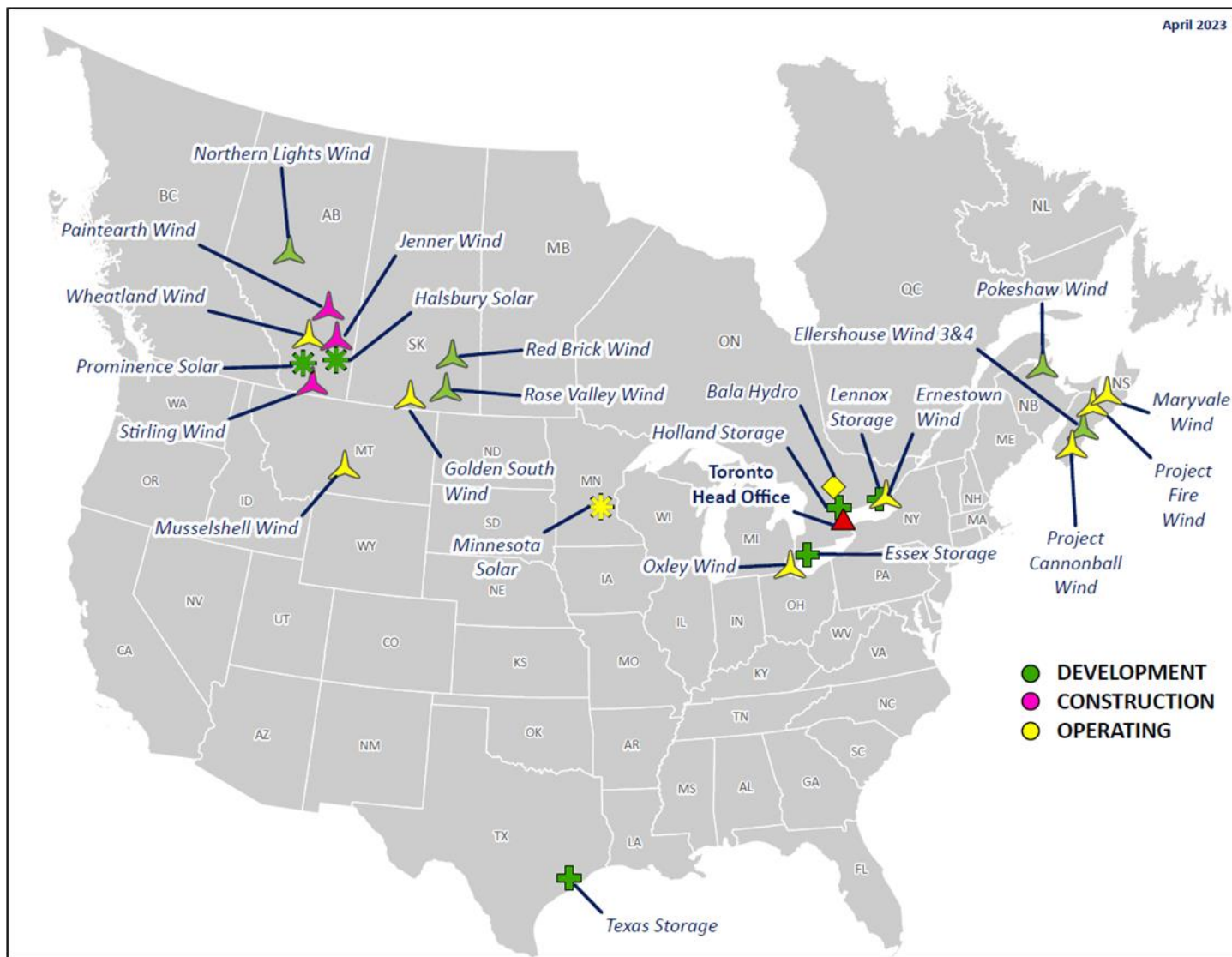
DEVELOPMENT PHILOSOPHY

PRI fundamentally believes that long-term economic growth need not, and should not, be achieved at the expense of the environment. We help communities break their dependence on fossil fuels so they can achieve economic growth at lower cost and with less risk.



RAPIDLY GROWING PORTFOLIO

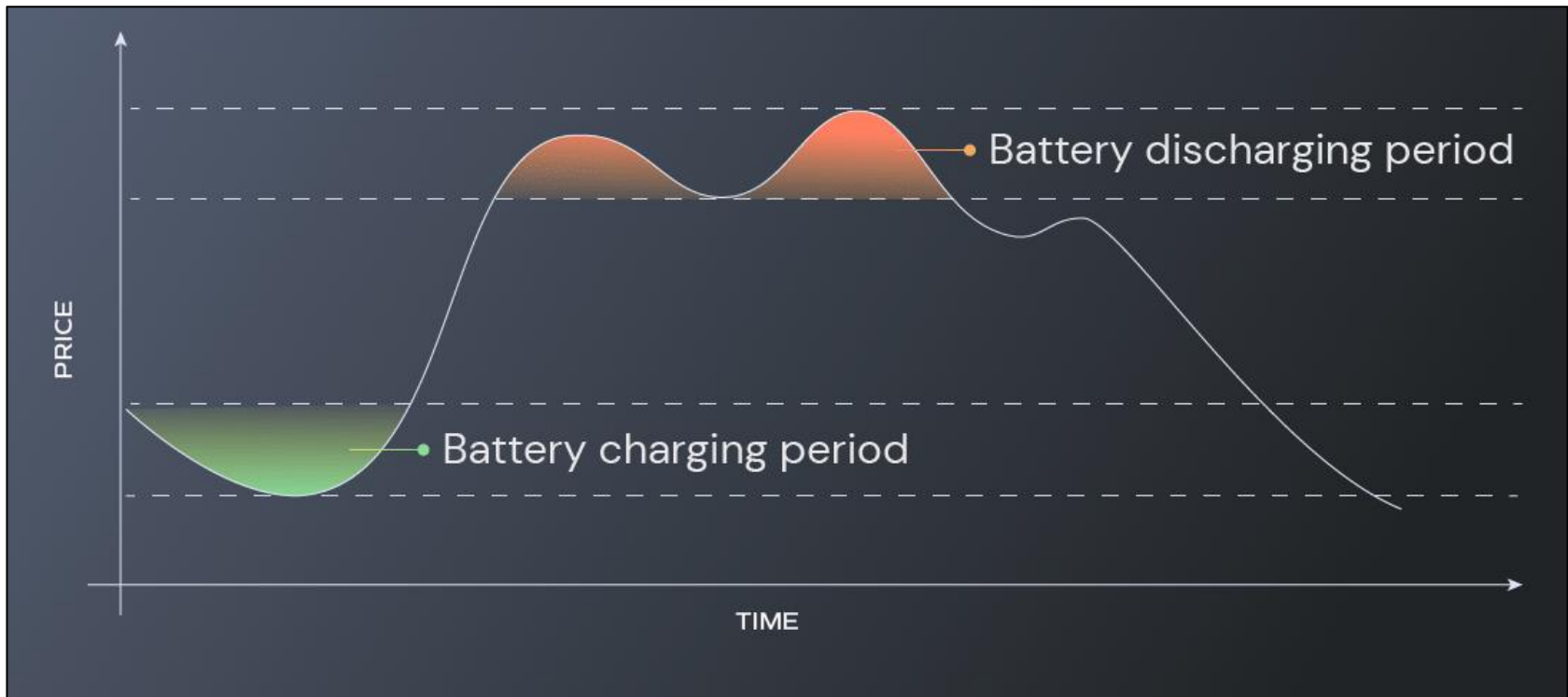
PRI's existing operating portfolio of 586 MW will grow to 1.2 GW by the end of 2023



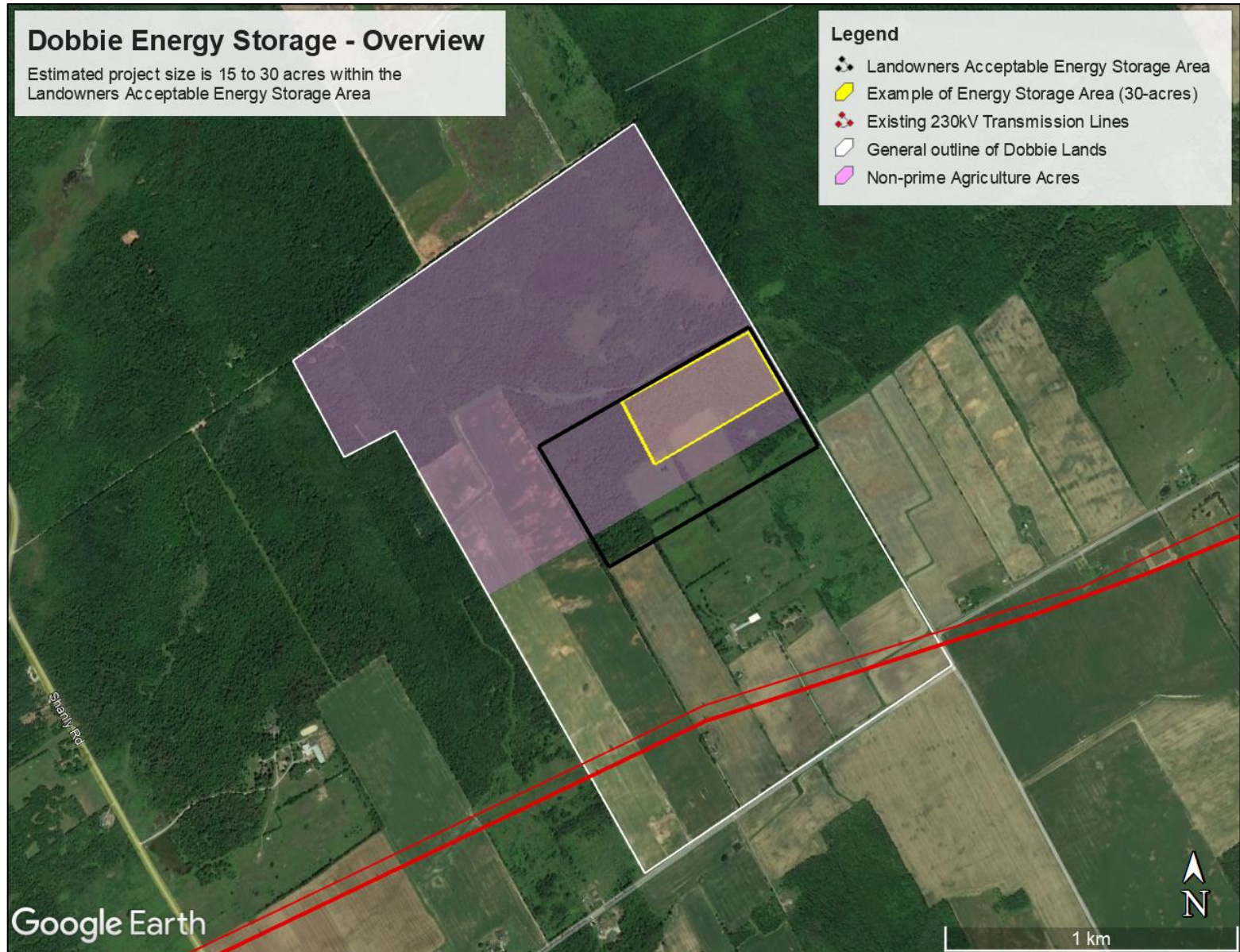
ONTARIO ENERGY STORAGE OPPORTUNITY

The Independent Electricity System Operator (IESO) – the entity responsible for operating the electricity market in Ontario - is forecasting a capacity need of approximately 4,000 MW by the mid-2020s

- ◆ To meet the forecasted capacity need, the IESO is procuring additional capacity resources through the LT1 RFP.
- ◆ Released this summer, the LT1 RFP will procure mostly energy storage projects that can store energy at times of peak generation until a time when it is most needed. Bids for LT1 are due December 12, 2023.
- ◆ The IESO requests that Project proponents seek a letter of support from the host municipalities prior to bid submission.



SKYVIEW STORAGE OVERVIEW



ENERGY STORAGE OVERVIEW

Energy storage works by storing energy when it is most plentiful and supplying it during periods of peak demand. This helps to maximize the use of our existing electrical grid and reduces the need for additional transmission infrastructure.

BESS Components:

- ◆ **Batteries (DC Blocks):** lithium-ion DC cell blocks placed in a rack within a temperature-controlled enclosure that stores and release energy.
- ◆ **Power Conversion System (PCS):** controls the current and voltage of the electricity received from the grid and adjusts the batteries via inverters and medium voltage transformers.
- ◆ **Energy Management System (EMS):** a.k.a. the brains of the facility, which commands, controls, monitors and manages the functionality of a project.
- ◆ **Substation:** the electrical connection point to the grid composed of main power transformers and protection and control equipment.
- ◆ **Other:** underground collector cables, roads, noise walls, foundations, etc.



COMMUNITY BENEFITS

As long-term owners and operators we pride ourself on cultivating strong relationships with the communities we work within. We understand proactive consultation and engagement are integral components of a successful project.

Key Community Benefits:

Resilient Electricity

Project will increase electrical capacity enabling future sustainable economic growth within the Township.

Local Employment

Jobs created during construction will include those related to land surveying, road construction, concrete and aggregates supply, equipment installation, and substation construction and testing to name a few.

Property Tax

The Project will be a source of significant and reliable contributions to the Township's tax base while requiring minimal municipal services for decades to come. The Township can use the increased tax revenue to fund roads, schools and improve municipal services.

Community Benefit Fund

Through consultation with the Township and local stakeholders PRI intends to establish a community benefit fund that will support a thriving community and vibrant countryside.

GHG Reduction

The Project will also help to reduce Ontario's emissions by limiting the need to run natural gas generators during times of peak loads.





CONTACT US

Will Patterson

Senior Manager, Development
wpatterson@potentia Renewables.com
236.808.5270