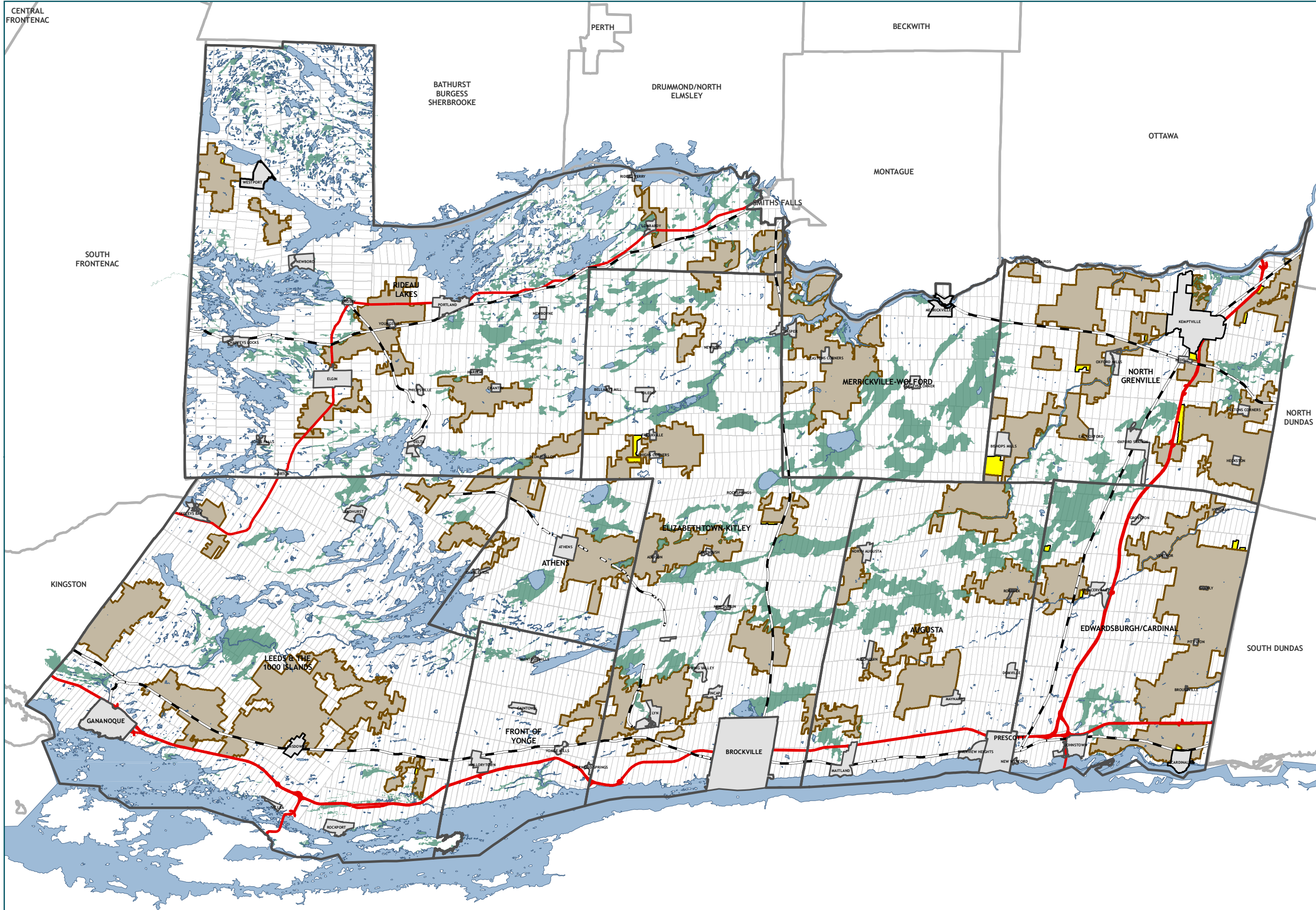


# FINAL RECOMMENDED AGRICULTURAL AREA



- RECOMMENDATION**
- Prime Agriculture
- NATURAL FEATURES**
- Provincially Significant Wetlands
  - Active/Abandoned Railway
  - Removed Lands (January to March)

The information displayed on this map has been compiled from various sources. While every effort has been made to accurately depict the information, this map should not be relied on as being a precise indicator of locations.

Copyright United Counties of Leeds and Grenville, 2024.  
All rights reserved.

May not be reproduced without permission.  
This is not survey data.

