

Committee: Committee of The Whole – Administration & Operations

Date: February 10, 2025

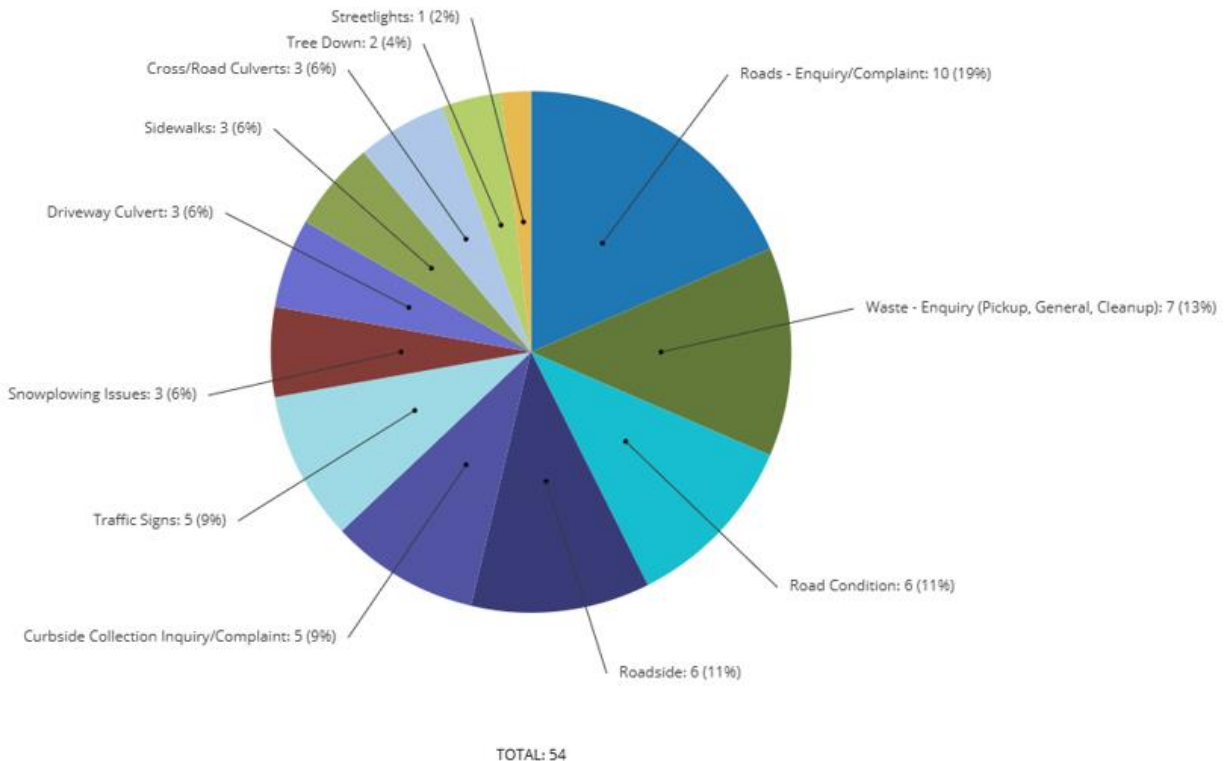
Department: Operations

Topic: 2024 4th Quarter Statistical Report

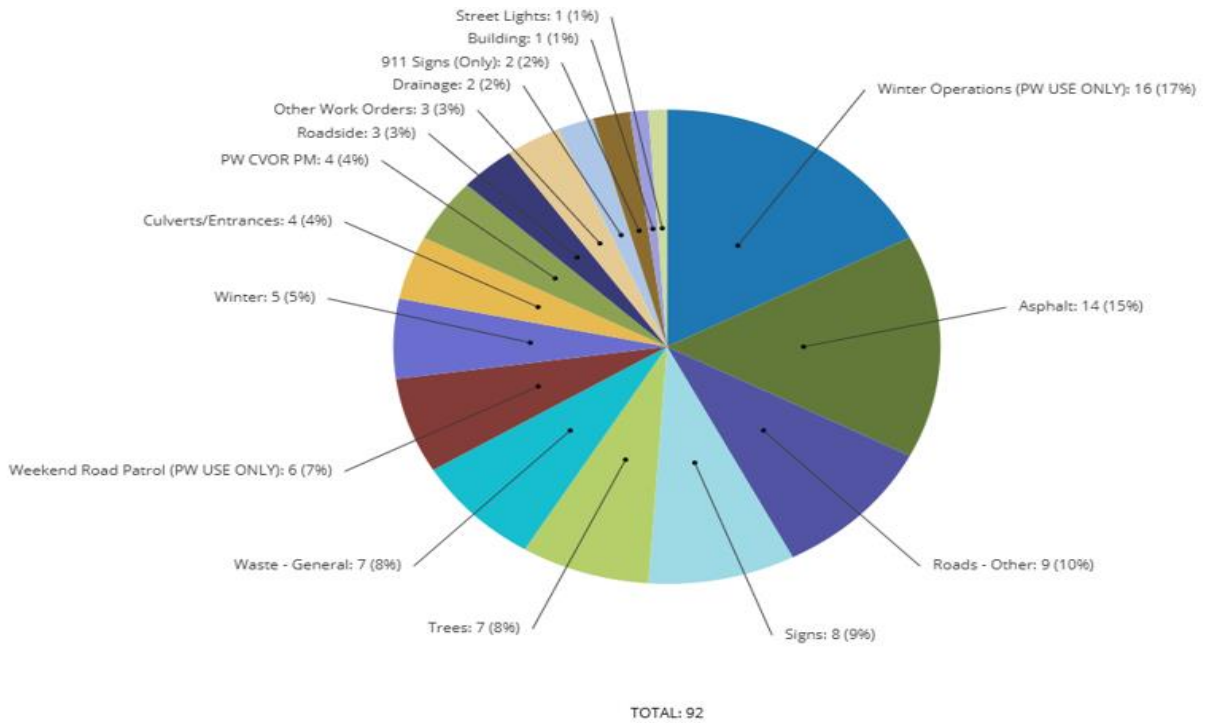
Background:

SECTION 1: Public Works

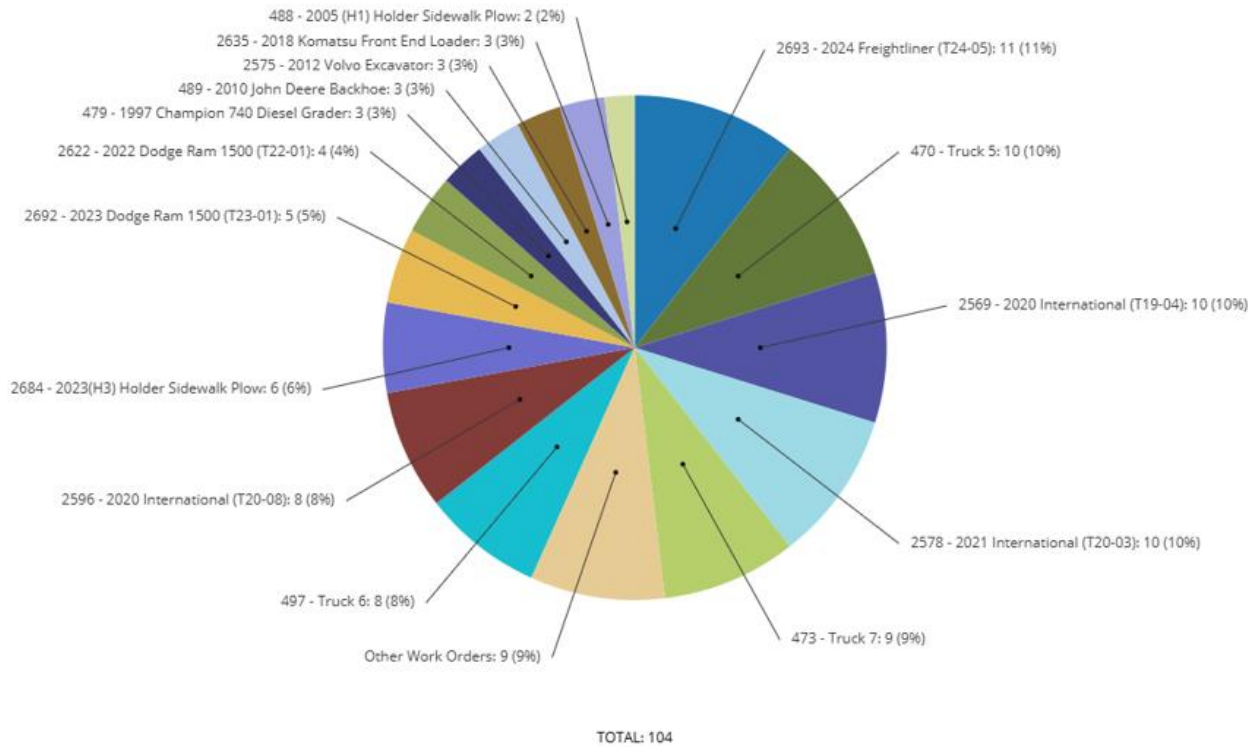
There were 54 service requests created during the 4th quarter. The requests are categorized based on type in the below pie chart.



There were 92 work orders created during the 4th quarter. The orders are categorized based on type in the below pie chart.



There were 104 Fleet Work Orders during the Quarter



SECTION 2: Waste Disposal

- 647 vehicles attended the site over the 13 Saturdays in quarter 4.
- Punch card sales through office: \$ 595.00
- Punch card sales through Cardinal Library: \$ 360.00
- Punch Card sales through Burchell's \$ 3060.00
- Total punch card sales for Quarter 2 and 3: \$ 4015.00
- November Brush/Leaf free and collected in the built-up areas

	Curbside Collection - HGC		Transfer Station – Limerick Env.
Month	Solid Waste (t)	Recycling (t)	Transported offsite (t)
October	94.42	31.24	16.19
November	77.51	30.32	11.90
December	94.92	31.92	9.13
Total	266.85	93.48	37.22

SECTION 3: Environmental Services

<u>4th Quarter Cardinal Water Treatment Plant Flow Summary</u>				
Month	Monthly Flow (m ³)	Minimum Daily Flow (m ³)	Maximum Daily Flow (m ³)	Average Daily Flow (m ³)
October	13,525	326	586	436
November	12,226	330	494	408
December	12,652	309	526	408

<u>4th Quarter Summary of Operational Parameters – Cardinal WTP</u>									
	UV	Filter 1A	Filter 1B	Filter 2A	Filter 2B	pH	Pressure	Raw Cl ₂	Post Chlorine
Average	50.70	0.02	0.02	0.10	0.02	8.22	69.22	1.72	2.56
Unit	mJ/cm ²	NTU	NTU	NTU	NTU		PSI	mg/L	mg/L
Compliance	40	1	1	1	1	6.5-8.5	>20		>0.20

<u>4th Quarter Microbiological Testing for the Cardinal Water System</u>				
	Number of Samples	Total Coliform	<i>E. coli</i>	HPC (min-max)
October - December	52	0	0	<2
Compliance for TC/EC is zero. HPC guideline is less than 500.				

4th Quarter Microbiological Testing- Industrial Park				
	Number of Samples	Total Coliform	<i>E. coli</i>	HPC (min-max)
October - December	13	0	0	<2
Compliance for TC/EC is zero. HPC guideline is less than 500.				

Description	Prysmian Chlorine Residual	Greenfield Chlorine Residual	Pressure (PSI)
Quarterly Average	0.86	0.58	74
Units	mg/L	mg/L	PSI
Compliance	>0.05	>0.05	>20

4th Quarter Report for Windmill Pumping Station				
Month	Total Flow (m³)	Minimum Daily Flow (m³)	Maximum Daily Flow (m³)	Average Daily Flow (m³)
October	76,513	1715	3409	2468
November	75,771	2184	2829	2528
December	70,026	1019	2688	2334

4th Quarter Report for Spencerville Lagoons				
Month	Total Flow (m³)	Minimum Daily Flow (m³)	Maximum Daily Flow (m³)	Average Daily Flow (m³)
October	2526	74	100	82
November	2740	74	105	91
December	3077	82	157	99

4th Quarter Report for Cardinal WWTP				
Month	Total Flow (m³)	Minimum Daily Flow (m³)	Maximum Daily Flow (m³)	Average Daily Flow (m³)
October	16,809	448	658	542
November	15,173	415	698	506
December	25,159	544	1140	812

4th Quarter October - December	BOD (mg/L)	Suspended Solids (mg/L)	Total Phosphorus (mg/L)	Ammonia (mg/L)	<i>E.Coli</i>
Average	3.0	3.6	0.09	1.52	2.9
Units	mg/L	mg/L	mg/L	mg/L	CFU
Compliance	25	25	1		
Objective	<15	<15	< 1	<4	<200

Month	BOD Removal	Suspended Solids Removal	Phosphorus Removal	Ammonia Removal
October	97%	98%	98%	90%
November	98%	98%	97%	94%
December	97%	98%	97%	99%



Director of Operations