

Municipal 911 Address Program

Prepared for Committee of the Whole
Administration & Operations

Municipal 911 Address Program

Purpose:

To enable emergency services to quickly and accurately locate properties in an emergency

Our current bylaw versions

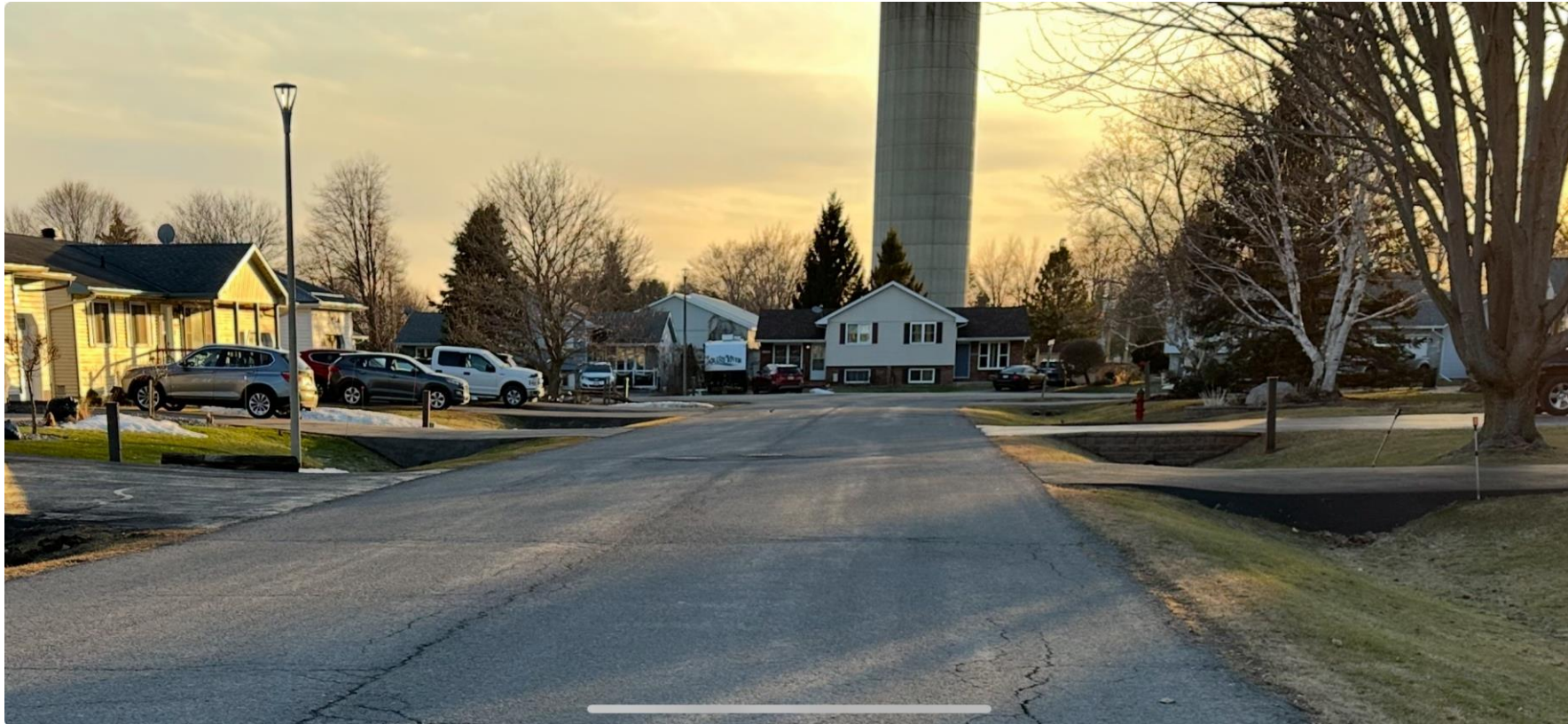
Bylaw 94-10 Village of Cardinal Amendment 2000-22 changed street names (ex. Second Street to Gill Street)

- Number affixed to building
- No charge or standardized location

Bylaw 1995-0011 Township of Edwardsburgh

- Number on blade affixed to post at entranceway
- Must be perpendicular to face oncoming traffic
- Charge for the post and blade

94-10 example of looking down the street



94-10 example of sign affixed to building



1995-0011 example looking down the street



Rural number spacing (original 1995-0011)

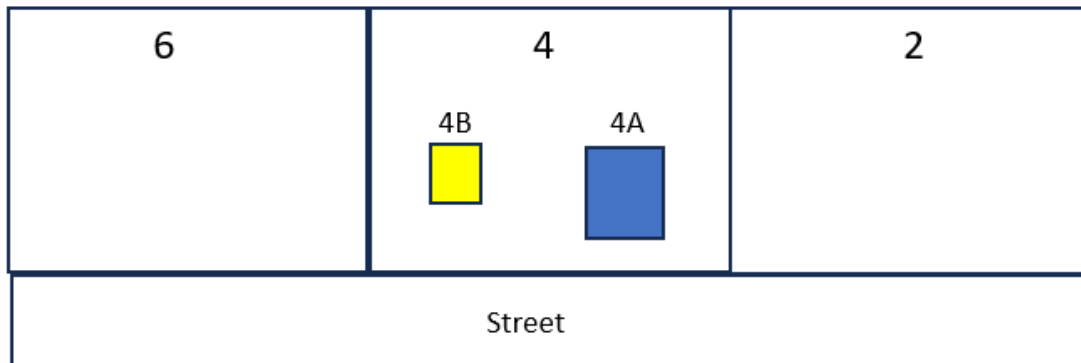


Current assignment of numbers

ARU – additional residential unit

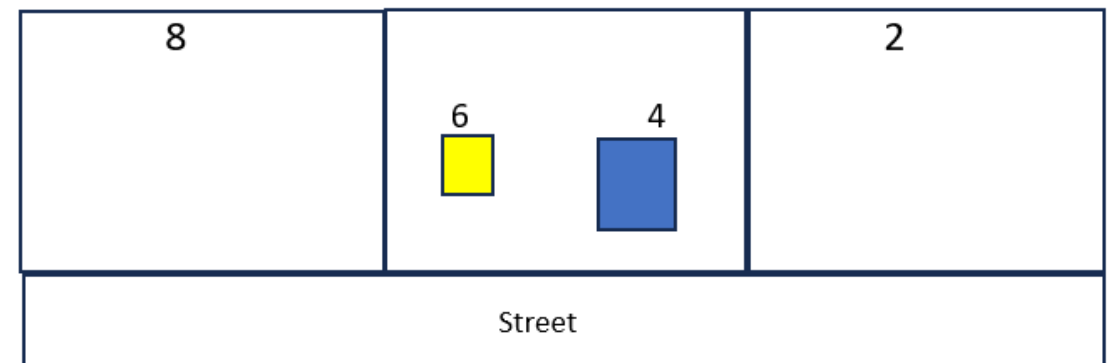
Example:

Where we don't have room to assign a new civic number (ARU or severance)



Example:

Where we have room to assign a new civic number (ARU or severance)



Limitations of current bylaws

- Inconsistency
- Outdated
- The potential degree of intensification was not fully contemplated at the time the bylaws were introduced

Bylaw update: Key areas

- Improving health and safety
- Create a single bylaw for entire Township
- Establish a more uniform and standardized method for number assignments
- Establish additional number capacity for new subdivisions to accommodate future subdividing or additional residential units and allow unique number identifications
- Establish requirements for owners to better identify units contained on a property

Bylaw update: Proposed standards

- Standardize the post and reflective number blade at the entranceway for all properties in the Township
- Unique number available for every 6m interval on all new streets/roads in the built-up areas and 15m interval for all rural locations.
- Require every unit with an exterior principal entry to have an additional unit number or letter assigned to every unit.

Aligning with our Strategic Plan

Livable community

- Improve navigation and connects residents to available services.

Growth and economic development

- Supports our efforts to expand housing options.

Good governance

- Increase efficiency of services (emergency response, mail, curbside collection).
- Provides clear guidance to residents and developers on civic addressing requirements.

Implementation and financial option #1

- Material cost per blade and post \$95.00
- Approximate number of properties impacted - 800
- Universal implementation using a special one-time area charge to Village of Cardinal on the tax bill (supply and install)
- Pay full cost or reduced cost
- Timeframe of completion 1 to 3 years broken down into quadrants

Implementation and financial option #2

- Material cost per blade and post \$95.00
- Staged implementation triggered by either an application to the township (ex. Building permit) or asset street name change.
- Voluntary program at a reduced cost

Discussion?