

Committee: Committee of The Whole – Administration & Operations

Date: April 13, 2026

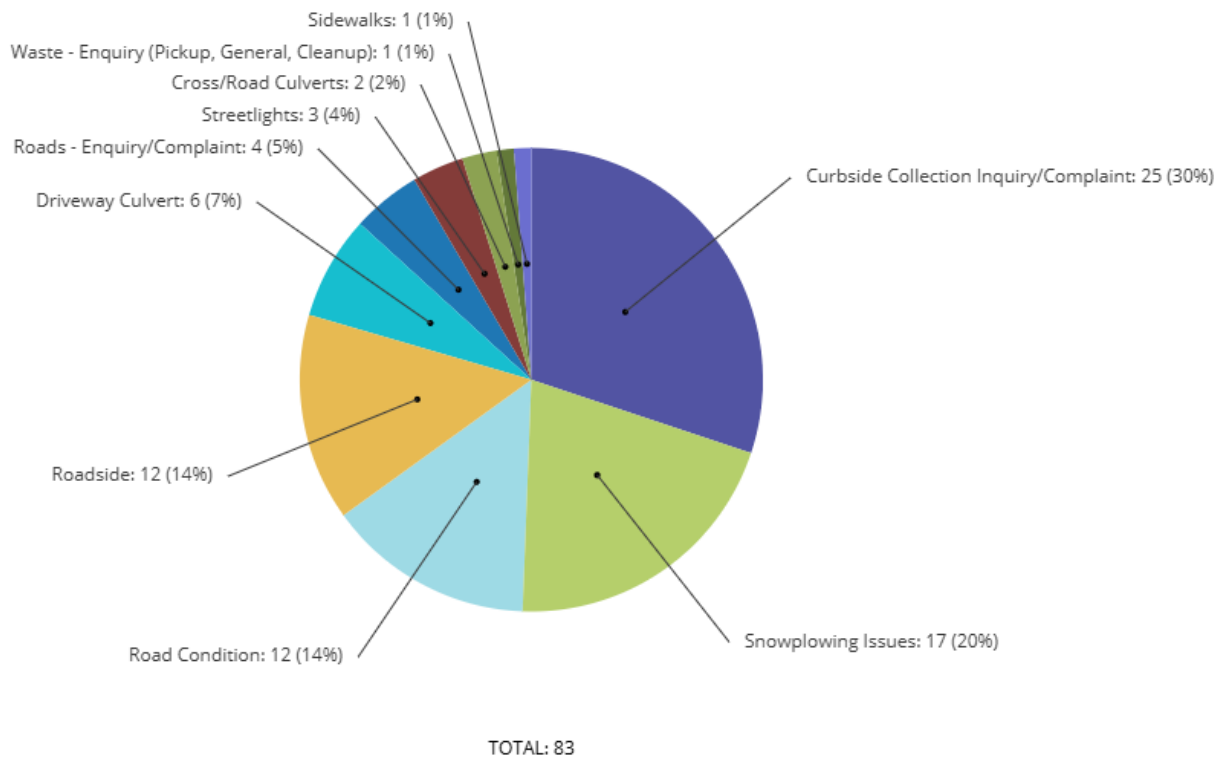
Department: Operations

Topic: 2026 1st Quarter Statistical Report

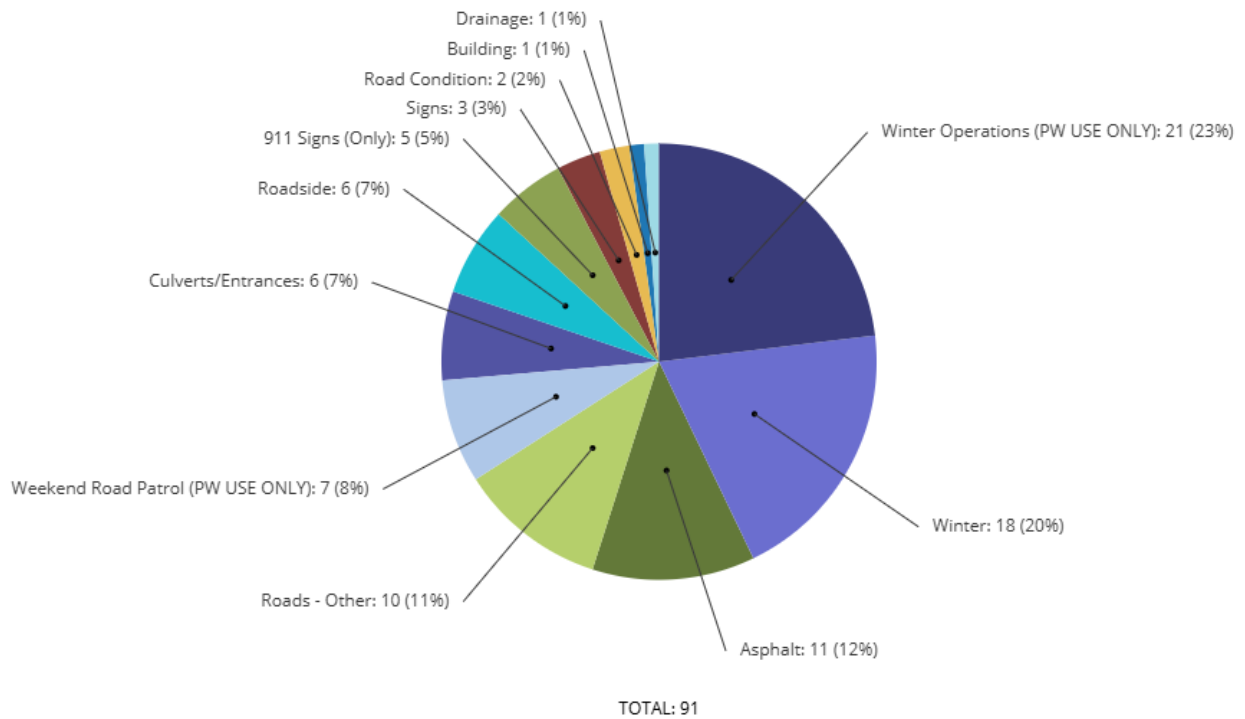
Background:

SECTION 1: Public Works

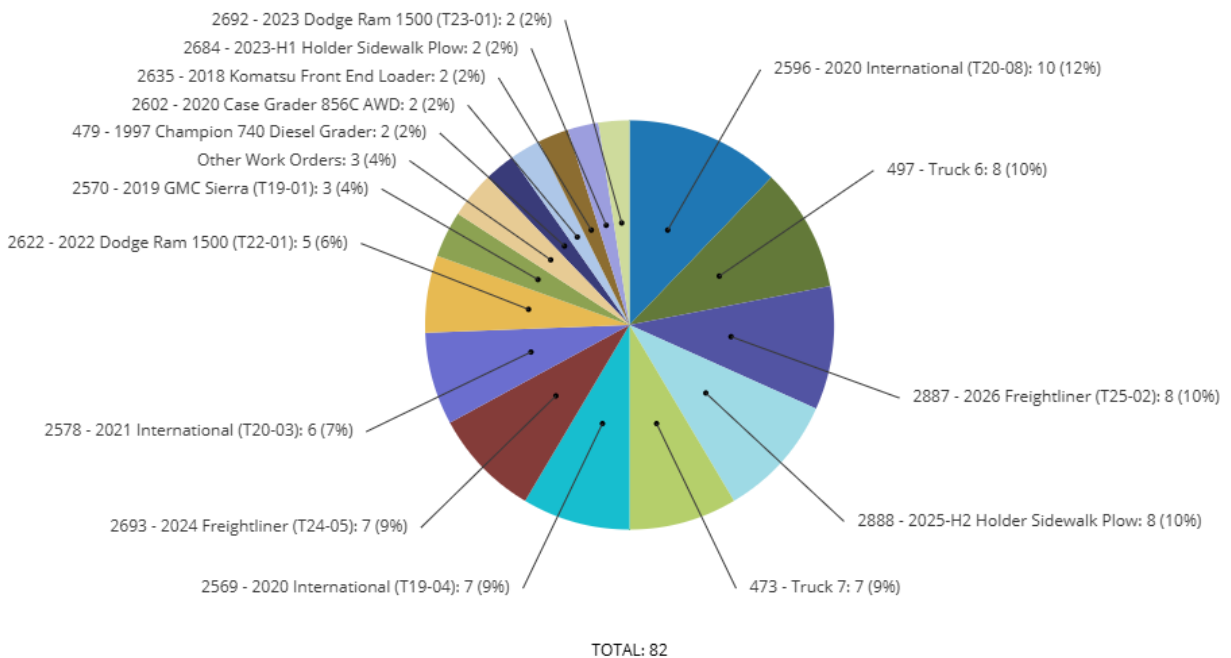
There were 83 service requests created during the 1st quarter. The requests are categorized based on type in the pie chart below:



There were 91 work orders created during the 1st quarter. The orders are categorized based on type in the pie chart below:



There were 82 Fleet Work Orders during the Quarter. The orders are categorized based on type in the pie chart below:



SECTION 2: Waste Disposal

- 220 vehicles attended the site over the 13 Saturdays in quarter 1.
- Punch card sales through office: \$ 250.00
- Punch card sales through Cardinal Library: \$ 0.00
- Punch Card sales through Burchell's \$ 2065.50
- Total punch card sales for Quarter 1: \$ 2315.50

Transfer Station – Limerick Env.		
Month	Solid Waste (t)	Transported offsite (t)
January	95.70	7.34
February	73.08	4.72
March	85.49	20.89
Total	254.27	32.95

SECTION 3: Environmental Services

<u>1st Quarter Cardinal Water Treatment Plant Flow Summary</u>				
Month	Monthly Flow(m ³)	Minimum Daily Flow (m ³)	Maximum Daily Flow (m ³)	Average Daily Flow (m ³)
January	12561	281	967	405
February	10662	308	464	381
March	11440	238	477	369

<u>1st Quarter Summary of Operational Parameters – Cardinal WTP</u>									
	UV	Filter 1A	Filter 1B	Filter 2A	Filter 2B	pH	Pressure	Raw Cl2	Post Chlorine
Average	45.65	0.02	0.02	0.02	0.02	8.10	68.67	1.38	2.18
Unit	mJ/cm ²	NTU	NTU	NTU	NTU		PSI	mg/L	mg/L
Compliance	40	1	1	1	1	6.5-8.5	>20		>0.20

<u>1st Quarter Microbiological Testing for the Cardinal Water System</u>				
	Number of Samples	Total Coliform	<i>E. coli</i>	HPC (min-max)
January - March	52	0	0	<2-2
Compliance for TC/EC is zero. HPC guideline is less than 500.				

1st Quarter Microbiological Testing- Industrial Park				
	Number of Samples	Total Coliform	<i>E. coli</i>	HPC (min-max)
January - March	13	0	0	<2-2
Compliance for TC/EC is zero. HPC guideline is less than 500.				

Description	Prysmian Chlorine Residual	Greenfield Chlorine Residual	Pressure (PSI)
Quarterly Average	0.99	0.76	71.89
Units	mg/L	mg/L	PSI
Compliance	>0.05	>0.05	>20

1st Quarter Report for Windmill Pumping Station				
Month	Total Flow (m ³)	Minimum Daily Flow (m ³)	Maximum Daily Flow (m ³)	Average Daily Flow (m ³)
January	67500	1955	2495	2177
February	65633	2070	2705	2344
March	74691	1662	2753	2409

1st Quarter Report for Spencerville Lagoons				
Month	Total Flow (m ³)	Minimum Daily Flow (m ³)	Maximum Daily Flow (m ³)	Average Daily Flow (m ³)
January	3397	87	151	110
February	2482	81	103	89
March	7619	90	496	246

1st Quarter Report for Cardinal WWTP				
Month	Total Flow (m ³)	Minimum Daily Flow (m ³)	Maximum Daily Flow (m ³)	Average Daily Flow (m ³)
January	22206	510	1024	716
February	14265	447	619	509
March	45261	526	2548	1460

1st Quarter January - March	BOD (mg/L)	Suspended Solids (mg/L)	Total Phosphorus (mg/L)	Ammonia (mg/L)	<i>E.Coli</i>
Average	3.13	3.4	0.08	0.47	4
Units	mg/L	mg/L	mg/L	mg/L	CFU
Compliance	25	25	1		
Objective	<15	<15	< 1	<4	<200

Month	BOD Removal	Suspended Solids Removal	Phosphorus Removal	Ammonia Removal
January	97%	98%	98%	99%
February	98%	98%	98%	99%
March	95%	97%	94%	92%

Eri Wemema

Director of Operations