

NEWPORT MUNICIPAL DRAIN

ENGINEER'S REPORT – PRELIMINARY COUNCIL REVIEW

MAY 25TH, 2021

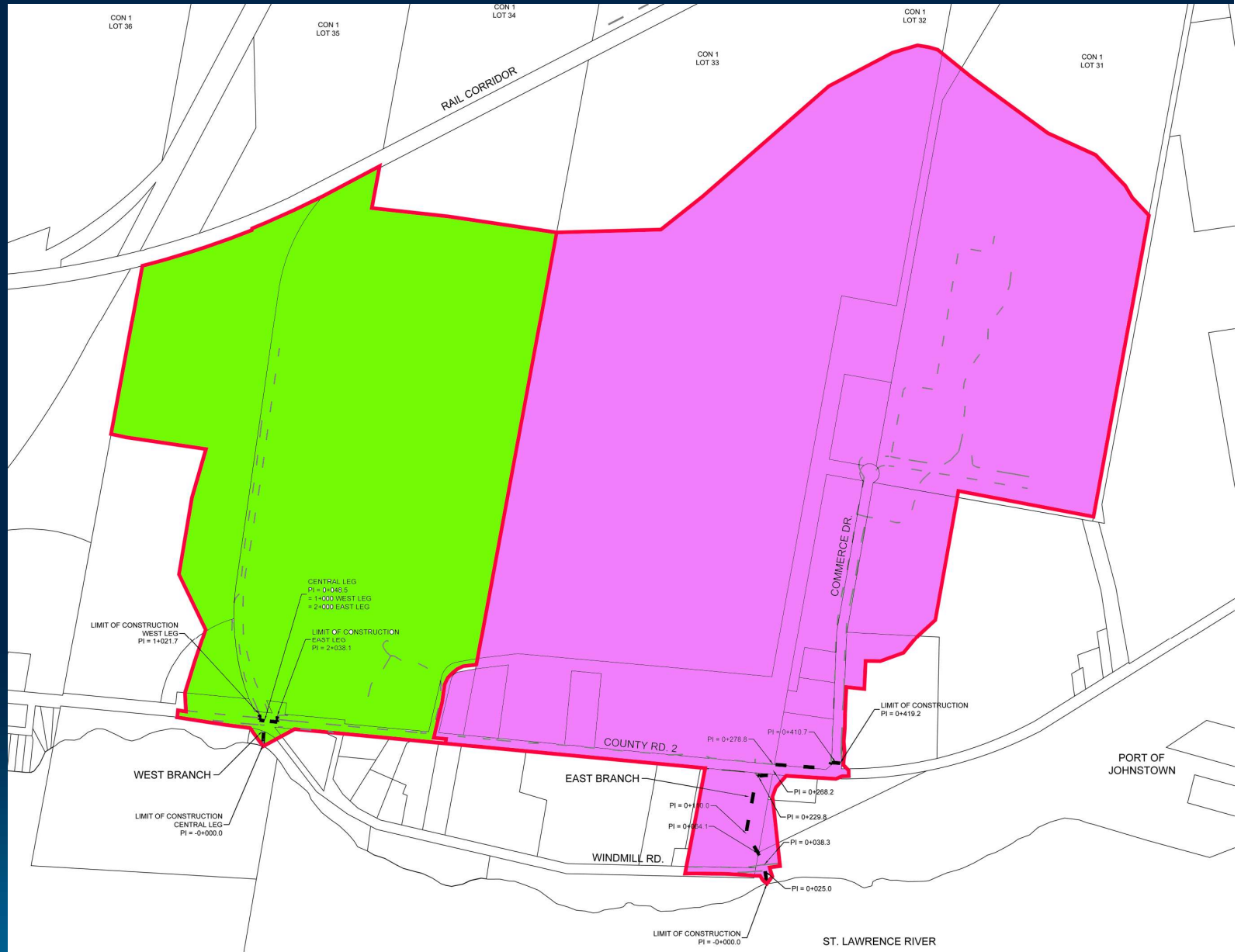
Presented by:

Lorne Franklin, L.E.T., C.E.T.

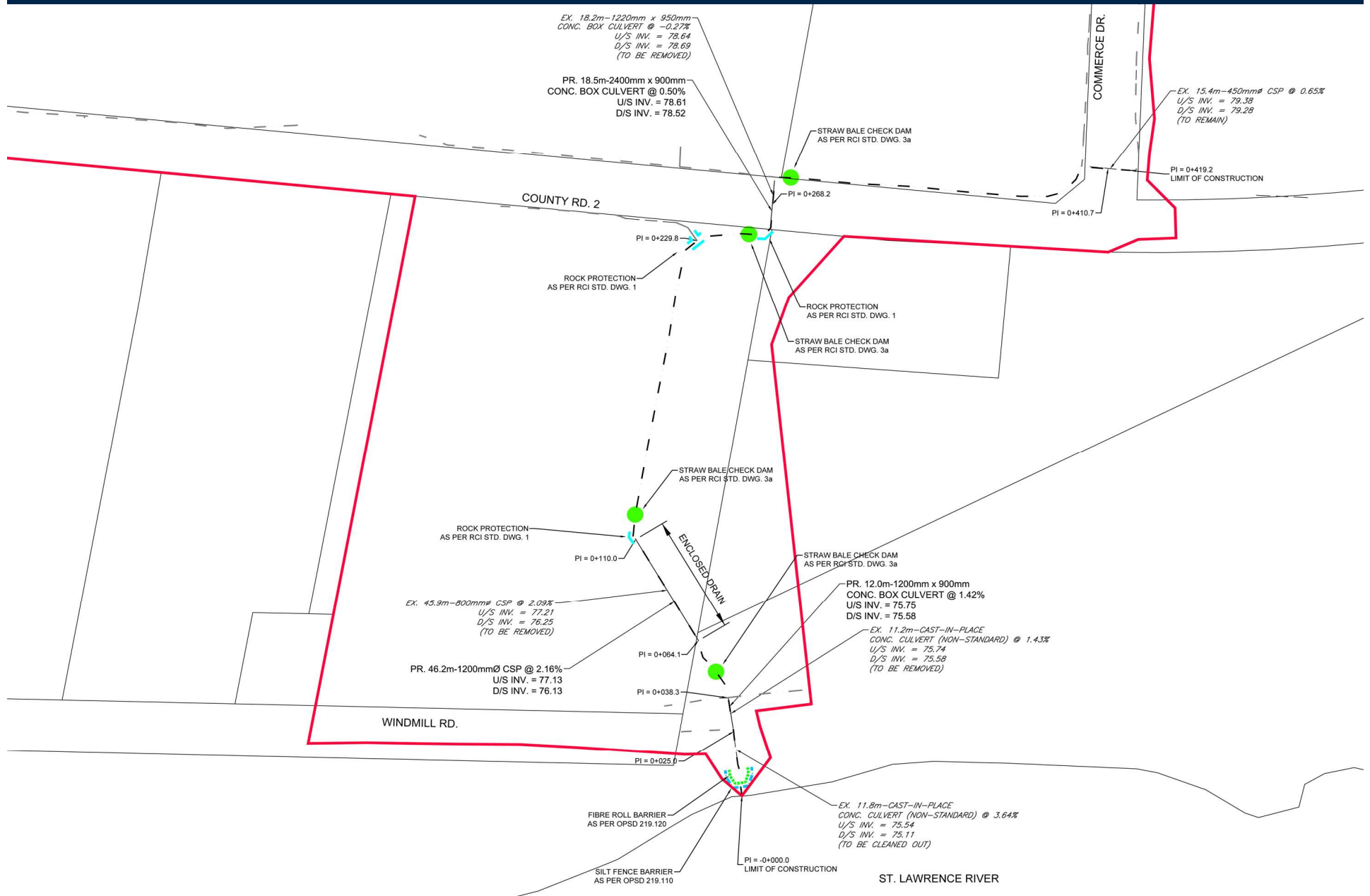
Andy Robinson, P.Eng.

Robinson Consultants Inc.

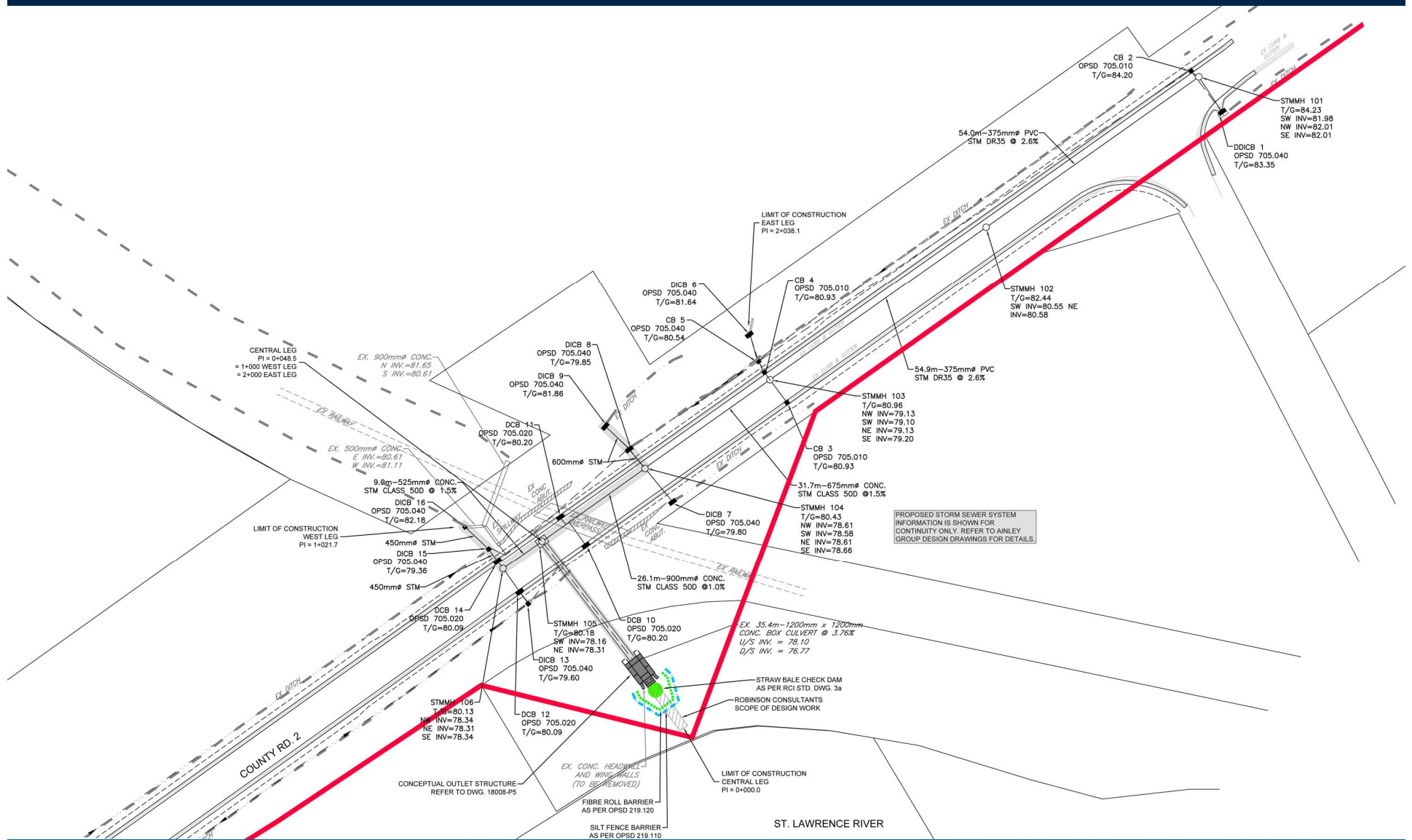
Location Plan



Location Plan – East Branch



Location Plan – West Branch



INTRODUCTION

■ HISTORY

- Robinson Consultants Inc. was appointed by the Township of Edwardsburgh/Cardinal on January 22, 2018 to complete an Engineer's Report on the proposed Newport Municipal Drain.
- The Engineer's Report for the Newport Municipal Drain was initiated by petition submitted by the County of Leeds and Grenville as the Road Authority for County. Rd. 2. under Section 4.1(c) of the Ontario Drainage Act, R.S.O. 1990 (Act).
- The purpose of the proposed drain is to provide improved drainage and conveyance of flow to a sufficient outlet (as defined by the Act) for surface drainage within the County. Rd. 2 ROW between Reilly St. and Commerce Drive.

INTRODUCTION

■ HISTORY

- An on-site meeting was held on June 14, 2018 to discuss the requirements for drainage and other concerns within the drainage area.

INTRODUCTION

■ HISTORY

- The primary issues put forward by the County Road Authority representative present at the meeting were as follows:
 - Improved drainage for County. Rd. 2 between Reilly St. and Commerce Drive.
 - Previous flooding incidents on County. Rd. 2 at the Port of Johnstown rail-spur overpass
 - Conveyance of flow to a sufficient outlet through downstream lands

INTRODUCTION

■ HISTORY

- The primary concerns put forward by the landowners present at the meeting were as follows:
 - Impacts of the construction on adjacent lands.
 - Costs of the project that may be assessed to individual landowners

INTRODUCTION

■ PURPOSE OF THE REPORT

- The Road Authority requires that the following concerns be addressed:
 - Improved drainage for the Road Authority lands described by the petition.
 - Conveyance of flow to a sufficient outlet for the area of improved drainage.
 - The environmental approving agencies, including the South Nation Conservation Authority (SNCA), Ontario Ministry of Environment Conservation and Parks (MECP) and the Federal Department of Fisheries and Oceans (DFO) require that certain measures and Best Management Practices (BMP) be implemented by the project for the protection of the environment

INTRODUCTION

■ SUFFICIENT OUTLET

- Flows collected for the purpose of improved drainage for County. Rd. 2 must be conveyed from the Road ROW to a sufficient outlet. The Drainage Act defines “sufficient outlet” as the following:

“...a point at which water can be discharged safely so that it will do no damage to lands or roads.”

- To provide sufficient outlet flows must be conveyed across private lands to the St. Lawrence River which has been determined by the Drainage Engineer to be the location where a sufficient outlet can be accommodated.

INTRODUCTION

■ PROTECTION OF THE ENVIRONMENT

- The implementation of measures to protect the environment, particularly water quality and sediment/erosion control is implemented through Best Management Practices (BMP), as indicated by the approving Agencies to address the concerns of the petitioning Road Authority while protecting the environment are prescribed by the Report.

INTRODUCTION

■ DISTRIBUTION OF COSTS

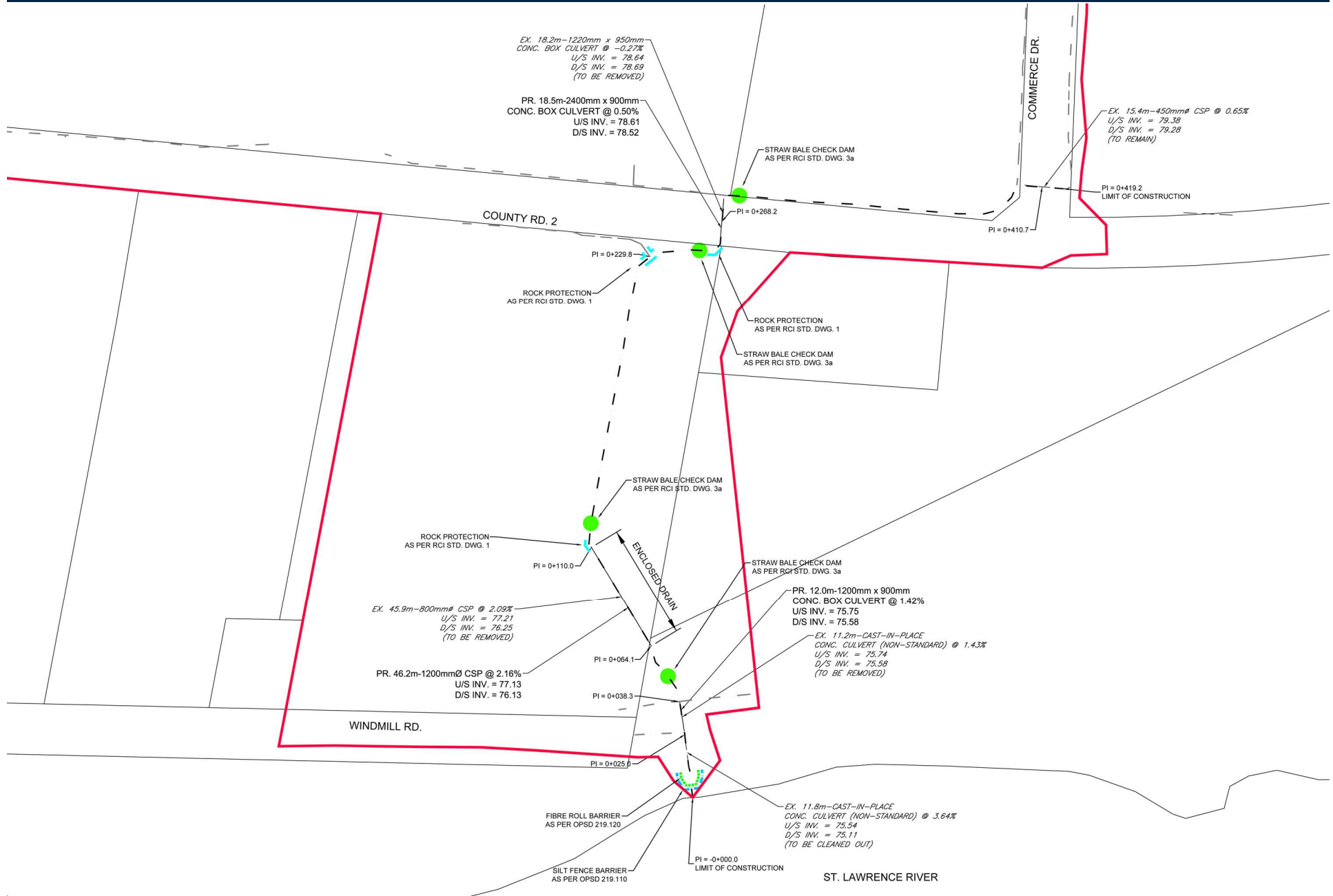
- The fair and equitable distribution of the costs associated with the construction and future maintenance of the Newport Municipal Drain are to be provided in the finalized Engineer's Report.

FINDINGS OF THE ENGINEER

Through the process implemented by the Engineer's Report it was determined that the two (2) existing constructed ditches provide outlet and should be incorporated into the Municipal Drain with provisions for the following:

- County Road Authority to complete work for the Cty. Rd. 2 Storm Sewer System (West Branch)
- Modification and repair of the outlet (West Branch)
- Modification and improvement of the existing ditch (East Branch)
- Protection and improvement of shoreline to the low water level (East and West Branch).

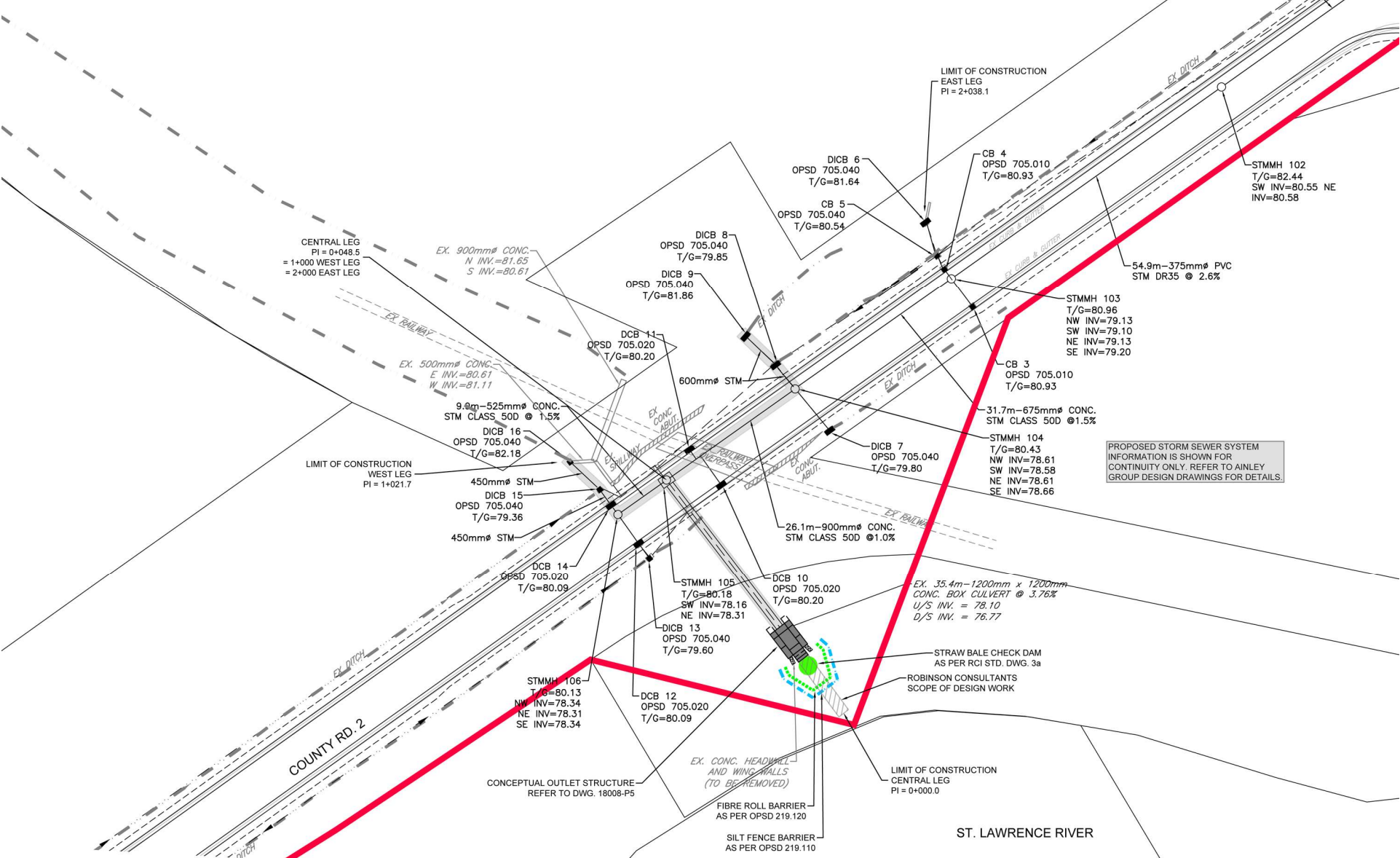
REQUIRED WORKS – EAST BRANCH



REQUIRED WORKS – EAST BRANCH



REQUIRED WORKS – WEST BRANCH



REQUIRED WORKS – WEST BRANCH



REQUIRED WORKS – WEST BRANCH



REQUIRED WORK

■ Township/County Road Authority

- Section 26 of the Drainage Act makes provision to assess a public utility or road authority for the increased cost of drainage works caused by the existence of the works of the public utility or road authority, or, for the utility to complete the work on its own behalf.
- The County Road 2 Storm Sewer is being modified and improved by the County Road Authority.
- County Road 2/East Branch crossing requires replacement
- The Windmill Rd./East Branch (Township) crossing requires replacement.

ENVIRONMENTAL CONSTRAINTS

■ Fish and Fish Habitat

- In general, the proposed work implements measures with limited impact on fish and fish habitat and is anticipated to successfully mitigate DFO concerns.
- DFO review is not currently finalized.

ENVIRONMENTAL CONSTRAINTS

■ Species at Risk (SAR)

- Some SAR exist within the general vicinity of the proposed work. In general, impacts to these species may be mitigated by avoidance measures such as adherence to timing windows, defishing of work areas and ensuring that species are not present during construction.

ENVIRONMENTAL CONSTRAINTS

■ Species at Risk (SAR)

- The SAR in the general vicinity of the drain includes the American Eel. Mitigation for this species may be more challenging as they may directly use the drain as habitat and can climb over and around obstacles. Specific mitigation measures may ultimately be required to finalize DFO mitigation measures.

ASSESSMENTS

- The proposed work makes provisions for a schedule of assessment that will address a fair and equitable distribution of the costs for construction and future maintenance.

GRANT ELIGIBILITY

- The Ontario Ministry of Agriculture, Food and Rural Affairs (OMAFRA) outlines the policies and procedures with regard to the 1/3 grant available to properties determined to be “Agricultural Lands” under the Agricultural Drainage Infrastructure Program (ADIP).
- In general, to be eligible for a grant, the property must be eligible for the Farm Tax Class (FTC).

FARM TAX CLASS (FTC)

To be eligible for the FTC a property must:

- Be assessed as farmland by the Municipal Property Assessment Corporation.
- Be used as part of an ongoing farming operation generating at least \$7,000 in annual revenue.
- Hold a valid Farm Business Registration Number, and be registered with AgriCorp.
- Have more than 50% Canadian ownership.

Questions?