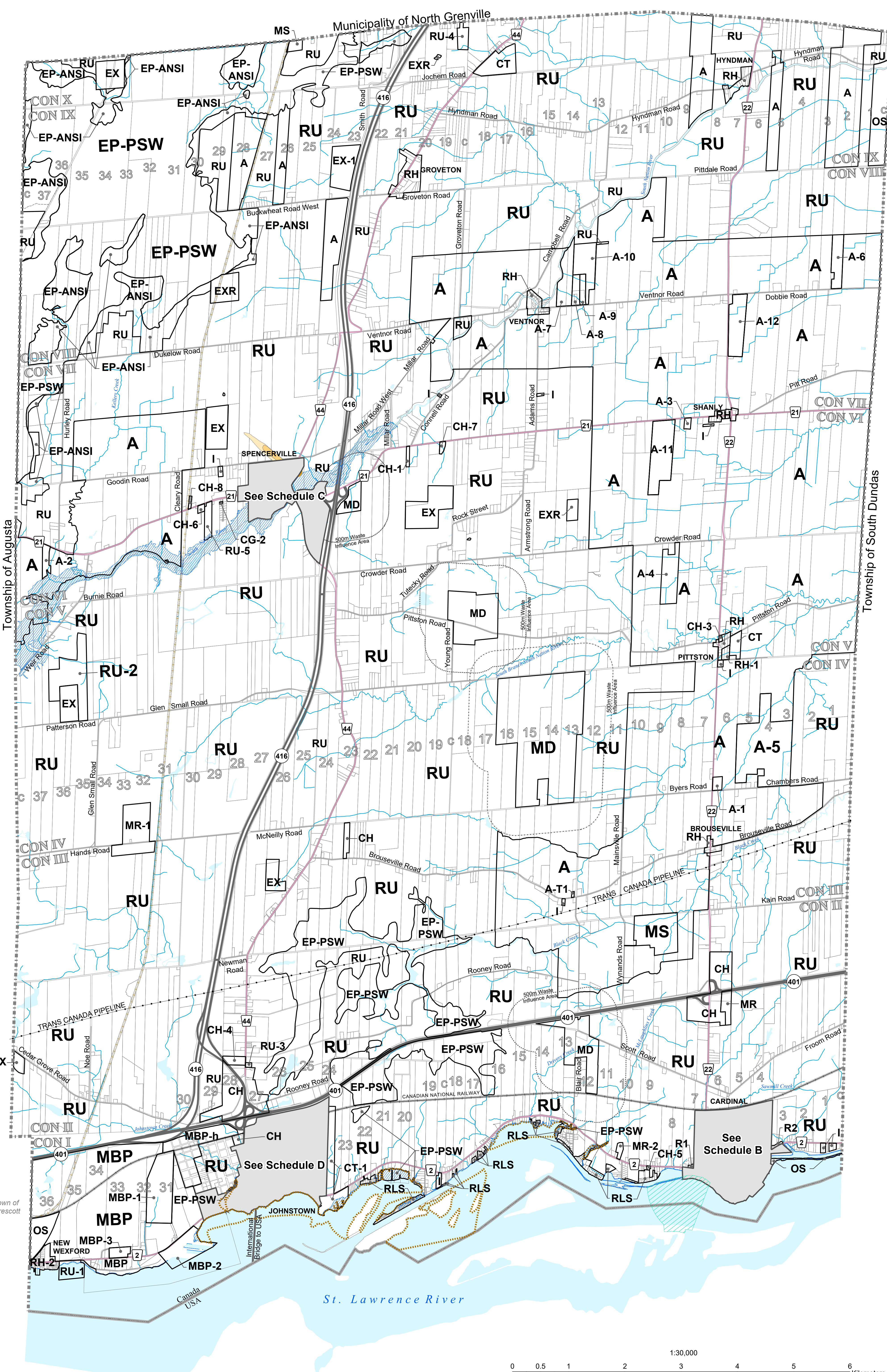
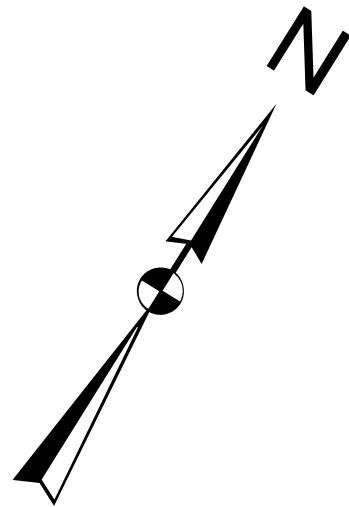


DRAFT 2

ZONING BY-LAW
NO.
SCHEDULE A



ZONING

- | | |
|---------|--------------------------------------|
| R1 | Residential First Density |
| R2 | Residential Second Density |
| R3 | Residential Third Density |
| RH | Hamlet Residential |
| RLS | Limited Services Residential |
| MCR | Main Street Commercial / Residential |
| MC | Main Street Commercial |
| CG | General Commercial |
| CH | Highway Commercial |
| CT | Tourist Commercial |
| MG | General Industrial |
| MR | Rural Industrial |
| MBP | Business Park Industrial |
| MS | Salvage Yard Industrial |
| MD | Disposal Industrial |
| I | Institutional |
| OS | Open Space |
| RU | Rural |
| A | Agriculture |
| EX | Mineral Aggregate Extraction |
| EXR | Mineral Aggregate Reserve |
| EP-PSW | Environmental Protection - PSW |
| EP-ANSI | Environmental Protection - ANSI |

Overlay Zones

- Within these areas certain zoning By-law Provisions require that reference be made to the Official Plan
- Flood Plain Overlay
- Source Water Protection Overlay
 - Intake Protection Zone Overlay (IPZ-1)
 - Wellhead Protection Area A Overlay (WHPA-A)
 - Wellhead Protection Area B Overlay (WHPA-B)
 - Wellhead Protection Area C Overlay (WHPA-C)
- Waterbody
- Watercourse

Notes:
All Islands Zoned OS Unless Otherwise Indicated.

TRANSPORTATION

- Provincial Highway
- County Road
- Township Road
- Private Road
- Active Railway
- Abandoned Railway

ISSUE DATE: FEBRUARY, 2022

NOVATECH
Engineers, Planners & Landscape Architects

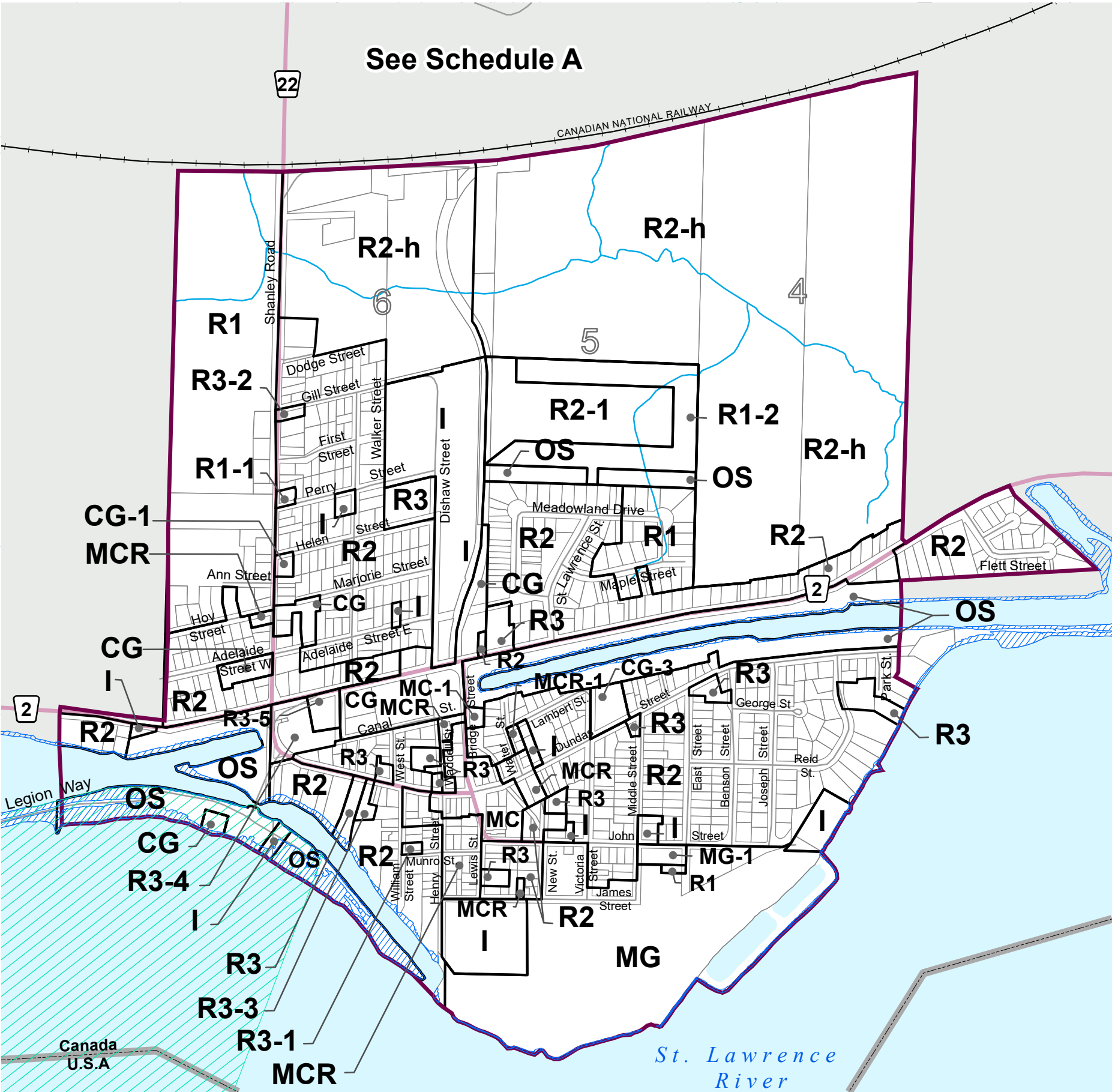
THIS PLAN IS BASED UPON INFORMATION OBTAINED IN JUNE 2018 THROUGH A DIGITAL DATA RELEASE AGREEMENT WITH THE UNITED COUNTIES OF LEEDS & GRENVILLE AND INCLUDES DATA FROM THE PROVINCE OF ONTARIO'S ONTARIO GEOSPATIAL DATA EXCHANGE DATABASE (LAND INFORMATION ONTARIO). MUNICIPAL PROPERTY ASSESSMENT CORPORATION AND TERANET INC. AND ALSO INCLUDES DATA OWNED AND/OR USED UNDER AGREEMENTS WITH SOUTH NATION CONSERVATION AUTHORITY.
JOB# 120067

DRAFT 2

TWP
EC
ca

EDWARDSBURGH CARDINAL

ZONING BY-LAW
NO.
SCHEDULE B
Village of Cardinal

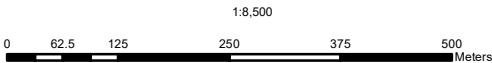


ZONING

R1	Residential First Density	MCR	Main Street Commercial / Residential	MG	General Industrial	I	Institutional
R2	Residential Second Density	MC	Main Street Commercial	MR	Rural Industrial	OS	Open Space
R3	Residential Third Density	CG	General Commercial	MBP	Business Park Industrial	RU	Rural
RH	Hamlet Residential	CH	Highway Commercial	MS	Salvage Yard Industrial	A	Agriculture
RLS	Limited Services Residential	CT	Tourist Commercial	MD	Disposal Industrial	EX	Mineral Aggregate Extraction

TRANSPORTATION

- Provincial Highway
- County Road
- Township Road
- Private Road
- Active Railway
- Abandoned Railway



EXR	Mineral Aggregate Reserve
EP-PSW	Environmental Protection - PSW
EP-ANSI	Environmental Protection - ANSI

Overlay Zones

Within these areas certain zoning By-law Provisions require that reference be made to the Official Plan

Flood Plain Overlay

- Source Water Protection Overlay
- Intake Protection Zone Overlay (IPZ-1)
- Wellhead Protection Area A Overlay (WHPA-A)
- Wellhead Protection Area B Overlay (WHPA-B)
- Wellhead Protection Area C Overlay (WHPA-C)
- Waterbody
- Watercourse

ISSUE DATE: FEBRUARY, 2022

NOVATECH

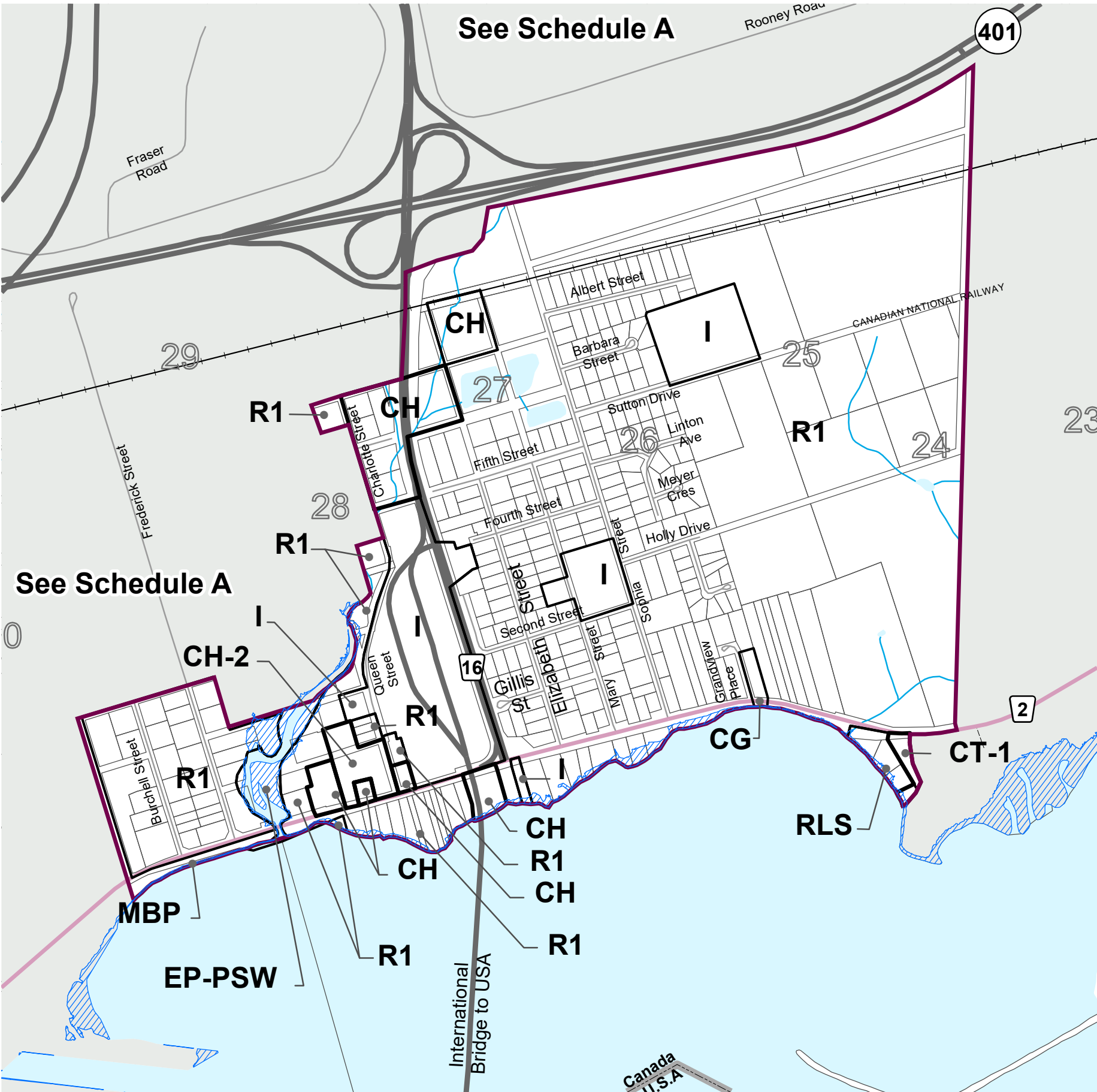
Engineers, Planners & Landscape Architects
Suite 200, 240 Michael Cowpland Drive
Ottawa, Ontario, Canada K2M 1P6
Telephone (613) 254-9643
Facsimile (613) 254-5867
Website www.novatech-eng.com

THIS PLAN IS BASED UPON INFORMATION OBTAINED IN JUNE 2018 THROUGH A DIGITAL DATA RELEASE AGREEMENT WITH THE UNITED COUNTIES OF LEEDS & GRENVILLE AND INCLUDES DATA FROM THE PROVINCE OF ONTARIO'S ONTARIO GEOSPATIAL DATA EXCHANGE DATABASE (LAND INFORMATION ONTARIO) MUNICIPAL PROPERTY ASSESSMENT CORPORATION AND TERANET INC. AND ALSO INCLUDES DATA OWNED AND/OR USED UNDER AGREEMENTS WITH SOUTH NATION CONSERVATION AUTHORITY.

JOB# 120067

DRAFT 2

ZONING BY-LAW
NO.
SCHEDULE D
Village of Johnstown

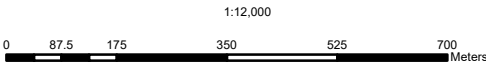


ZONING

R1	Residential First Density	MCR	Main Street Commercial / Residential	MG	General Industrial	I	Institutional
R2	Residential Second Density	MC	Main Street Commercial	MR	Rural Industrial	OS	Open Space
R3	Residential Third Density	CG	General Commercial	MBP	Business Park Industrial	RU	Rural
RH	Hamlet Residential	CH	Highway Commercial	MS	Salvage Yard Industrial	A	Agriculture
RLS	Limited Services Residential	CT	Tourist Commercial	MD	Disposal Industrial	EX	Mineral Aggregate Extraction

TRANSPORTATION

- Provincial Highway
- County Road
- Township Road
- Private Road
- Active Railway
- Abandoned Railway



- EXR Mineral Aggregate Reserve
- EP-PSW Environmental Protection - PSW
- EP-ANSI Environmental Protection - ANSI

Overlay Zones

Within these areas certain zoning By-law Provisions require that reference be made to the Official Plan

- Flood Plain Overlay

Source Water Protection Overlay

- Intake Protection Zone Overlay (IPZ-1)
- Wellhead Protection Area A Overlay (WHPA-A)
- Wellhead Protection Area B Overlay (WHPA-B)
- Wellhead Protection Area C Overlay (WHPA-C)
- Waterbody
- Watercourse

ISSUE DATE: FEBRUARY, 2022

NOVATECH

Engineers, Planners & Landscape Architects
Suite 200, 240 Michael Cowpland Drive
Ottawa, Ontario, Canada K2M 1P6
Telephone (613)254-9643
Facsimile (613)254-5867
Website www.novatech-eng.com

THIS PLAN IS BASED UPON INFORMATION OBTAINED IN JUNE 2016 THROUGH A DIGITAL DATA RELEASE AGREEMENT WITH THE UNITED CITIES OF LEEDS & GRENVILLE AND INCLUDES DATA FROM THE PROVINCE OF ONTARIO'S ONTARIO GEOSPATIAL DATA EXCHANGE DATABASE (LAND INFORMATION ONTARIO), MUNICIPAL PROPERTY ASSESSMENT CORPORATION AND TERRANET INC. AND ALSO INCLUDES DATA OWNED AND/OR USED UNDER AGREEMENTS WITH SOUTH NATION CONSERVATION AUTHORITY.

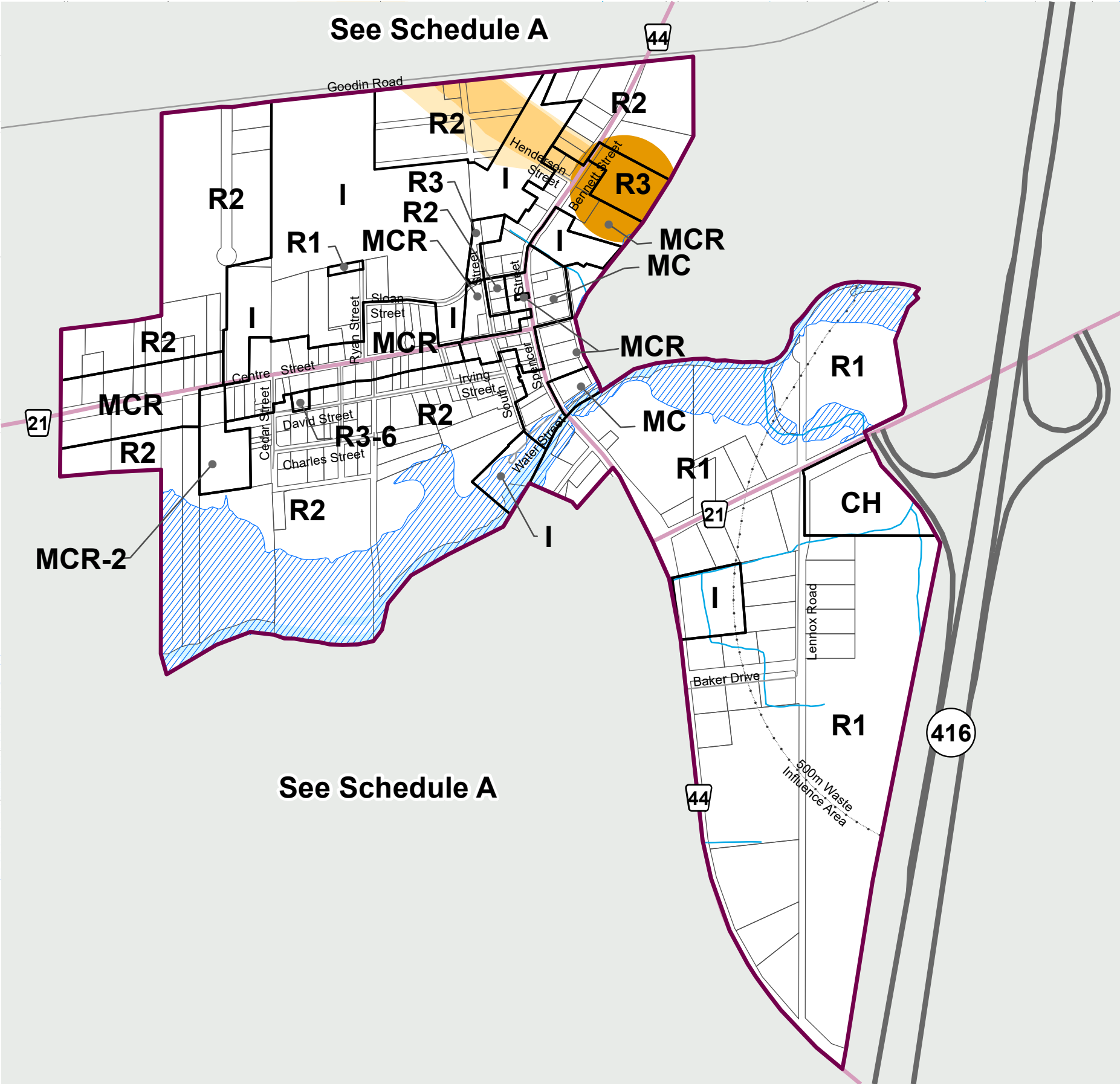
JOB# 120067

DRAFT 2



EDWARDSBURGH CARDINAL

ZONING BY-LAW
NO.
SCHEDULE C
Village of Spencerville

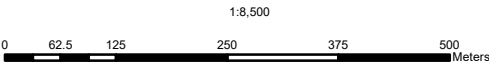


ZONING

R1	Residential First Density	MCR	Main Street Commercial / Residential	MG	General Industrial	I	Institutional
R2	Residential Second Density	MC	Main Street Commercial	MR	Rural Industrial	OS	Open Space
R3	Residential Third Density	CG	General Commercial	MBP	Business Park Industrial	RU	Rural
RH	Hamlet Residential	CH	Highway Commercial	MS	Salvage Yard Industrial	A	Agriculture
RLS	Limited Services Residential	CT	Tourist Commercial	MD	Disposal Industrial	EX	Mineral Aggregate Extraction

TRANSPORTATION

- Provincial Highway
- County Road
- Township Road
- Private Road
- Active Railway
- Abandoned Railway



EXR	Mineral Aggregate Reserve
EP-PSW	Environmental Protection - PSW
EP-ANSI	Environmental Protection - ANSI

Overlay Zones

Within these areas certain zoning By-law Provisions require that reference be made to the Official Plan

Flood Plain Overlay

Source Water Protection Overlay

- Intake Protection Zone Overlay (IPZ-1)
- Wellhead Protection Area A Overlay (WHPA-A)
- Wellhead Protection Area B Overlay (WHPA-B)
- Wellhead Protection Area C Overlay (WHPA-C)
- Waterbody
- Watercourse

ISSUE DATE: FEBRUARY, 2022



Engineers, Planners & Landscape Architects
Suite 200, 240 Michael Cowpland Drive
Ottawa, Ontario, Canada K2M 1P6
Telephone (613)254-9643
Facsimile (613)254-5867
Website www.novatech-eng.com
THIS PLAN IS BASED UPON INFORMATION OBTAINED IN JUNE 2018 THROUGH A DIGITAL DATA RELEASE AGREEMENT WITH THE UNITED COUNTIES OF LEEDS & GRENVILLE AND INCLUDES DATA FROM THE PROVINCE OF ONTARIO'S ONTARIO GEOSPATIAL DATA EXCHANGE DATABASE (LAND INFORMATION ONTARIO), MUNICIPAL PROPERTY ASSESSMENT CORPORATION, AND TERANET INC. AND ALSO INCLUDES DATA OWNED AND/OR USED UNDER AGREEMENTS WITH SOUTH NATION CONSERVATION AUTHORITY.
JOB# 120067